
Combined 3-Year Education Plan and Annual Education Results Report (AERR) for Wheatland Elementary School 2014 – 2015 – 2016



Lead with confidence
Learn without limits
Love who you are

Accountability Statement

The Education Plan for Wheatland Elementary the three years commencing August 28th, 2013 was prepared in accordance with the policies of Golden Hills School Division No. 75. This Education Plan aligns with the goals and priorities established by the jurisdiction and described in the Three Year Education Plan of Golden Hills School Division.

Publication and Communication

- The Wheatland Elementary School Accountability Pillar results will be posted on the school website <http://wheatland.ghsd75.ca/>

Measure Category	Measure Category Evaluation	Measure	Wheatland Elementary School			Alberta			Measure Evaluation		
			Current Result	Prev Year Result	Prev 3 Year Average	Current Result	Prev Year Result	Prev 3 Year Average	Achievement	Improvement	Overall
Safe and Caring Schools	Excellent	Safe and Caring	90.7	95.2	93.0	89.0	88.6	88.1	Very High	Maintained	Excellent
Student Learning Opportunities	n/a	Program of Studies	83.7	85.5	78.8	81.5	80.7	80.7	Very High	Maintained	Excellent
		Education Quality	93.0	93.4	94.2	89.8	89.4	89.3	Very High	Maintained	Excellent
Student Learning Achievement (Grades K-9)	Acceptable	PAT: Acceptable	82.5	85.3	85.6	79.0	79.1	79.2	Intermediate	Maintained	Acceptable
		PAT: Excellence	15.8	26.0	20.7	18.9	20.8	19.9	Intermediate	Maintained	Acceptable
		Work Preparation	88.5	64.1	70.9	80.3	79.7	79.9	Very High	Improved	Excellent
		Citizenship	88.8	87.9	87.2	83.4	82.5	82.0	Very High	Maintained	Excellent
Parental Involvement	Excellent	Parental Involvement	86.9	79.1	81.6	80.3	79.7	79.8	Very High	Maintained	Excellent
Continuous Improvement	Excellent	School Improvement	92.3	84.8	87.2	80.6	80.0	80.0	Very High	Improved	Excellent

Notes:

1. PAT results are a weighted average of the percent meeting standards (Acceptable, Excellence) on Provincial Achievement Tests. The weights are the number of students enrolled in each course. Courses included: English Language Arts (Grades 3, 6, 9), Science (Grades 6, 9), French Language Arts (Grades 3, 6, 9), Français (Grades 3, 6, 9).
2. Diploma results are a weighted average of percent meeting standards (Acceptable, Excellence) on Diploma Examinations. The weights are the number of students writing the Diploma Examination for each course. Courses included: English Language Arts 30-1, English Language Arts 30-2, French Language Arts 30-1, Français 30-1, Chemistry 30, Physics 30, Biology 30, Science 30.
3. Overall evaluations can only be calculated if both improvement and achievement evaluations are available.
4. The subsequent pages include evaluations for each performance measure. If jurisdictions desire not to present this information for each performance measure in the subsequent pages, please include a reference to this overall summary page for each performance measure.
5. Data values have been suppressed where the number of students or respondents is less than 6. Suppression is marked with an asterisk (*).
6. Please note that participation in Diploma Examinations and Grade 9 Provincial Achievement Tests was impacted by the flooding in June 2013. Caution should be used when interpreting trends over time for the province and those school authorities affected by the floods.

Measure Evaluation Reference

Achievement Evaluation

Achievement evaluation is based upon a comparison of Current Year data to a set of standards which remain consistent over time. The Standards are calculated by taking the 3 year average of baseline data for each measure across all school jurisdictions and calculating the 5th, 25th, 75th and 95th percentiles. Once calculated, these standards remain in place from year to year to allow for consistent planning and evaluation.

The table below shows the range of values defining the 5 achievement evaluation levels for each measure.

Measure	Very Low	Low	Intermediate	High	Very High
Safe and Caring	0.00 - 77.62	77.62 - 81.05	81.05 - 84.50	84.50 - 88.03	88.03 - 100.00
Program of Studies	0.00 - 66.31	66.31 - 72.65	72.65 - 78.43	78.43 - 81.59	81.59 - 100.00
Education Quality	0.00 - 80.94	80.94 - 84.23	84.23 - 87.23	87.23 - 89.60	89.60 - 100.00
Drop Out Rate	100.00 - 9.40	9.40 - 6.90	6.90 - 4.27	4.27 - 2.79	2.79 - 0.00
High School Completion Rate (3 yr)	0.00 - 57.03	57.03 - 62.36	62.36 - 73.88	73.88 - 81.79	81.79 - 100.00
PAT: Acceptable	0.00 - 71.50	71.50 - 77.76	77.76 - 84.91	84.91 - 88.69	88.69 - 100.00
PAT: Excellence	0.00 - 11.54	11.54 - 14.60	14.60 - 20.83	20.83 - 26.46	26.46 - 100.00
Diploma: Acceptable	0.00 - 71.28	71.28 - 77.34	77.34 - 84.16	84.16 - 88.87	88.87 - 100.00
Diploma: Excellence	0.00 - 8.77	8.77 - 12.71	12.71 - 19.16	19.16 - 23.03	23.03 - 100.00
Diploma Exam Participation Rate (4+ Exams)	0.00 - 31.10	31.10 - 44.11	44.11 - 55.78	55.78 - 65.99	65.99 - 100.00
Rutherford Scholarship Eligibility Rate (Revised)	0.00 - 43.18	43.18 - 49.83	49.83 - 59.41	59.41 - 70.55	70.55 - 100.00
Transition Rate (6 yr)	0.00 - 39.80	39.80 - 46.94	46.94 - 56.15	56.15 - 68.34	68.34 - 100.00
Work Preparation	0.00 - 66.92	66.92 - 72.78	72.78 - 77.78	77.78 - 86.13	86.13 - 100.00
Citizenship	0.00 - 66.30	66.30 - 71.63	71.63 - 77.50	77.50 - 81.08	81.08 - 100.00
Parental Involvement	0.00 - 70.76	70.76 - 74.58	74.58 - 78.50	78.50 - 82.30	82.30 - 100.00
School Improvement	0.00 - 65.25	65.25 - 70.85	70.85 - 76.28	76.28 - 80.41	80.41 - 100.00

Notes:

- 1) For all measures except Drop Out Rate: The range of values at each evaluation level is interpreted as greater than or equal to the lower value, and less than the higher value. For the Very High evaluation level, values range from greater than or equal to the lower value to 100%.
- 2) Drop Out Rate measure: As "Drop Out Rate" is inverse to most measures (i.e. lower values are "better"), the range of values at each evaluation level is interpreted as greater than the lower value and less than or equal to the higher value. For the Very High evaluation level, values range from 0% to less than or equal to the higher value.

Improvement Table

For each jurisdiction, improvement evaluation consists of comparing the Current Year result for each measure with the previous three-year average. A chi-square statistical test is used to determine the significance of the improvement. This test takes into account the size of the jurisdiction in the calculation to make improvement evaluation fair across jurisdictions of different sizes.

The table below shows the definition of the 5 improvement evaluation levels based upon the chi-square result.

Evaluation Category	Chi-Square Range
Declined Significantly	3.84 + (current < previous 3-year average)
Declined	1.00 - 3.83 (current < previous 3-year average)
Maintained	less than 1.00
Improved	1.00 - 3.83 (current > previous 3-year average)
Improved Significantly	3.84 + (current > previous 3-year average)

Overall Evaluation Table

The overall evaluation combines the Achievement Evaluation and the Improvement Evaluation. The table below illustrates how the Achievement and Improvement evaluations are combined to get the overall evaluation.

Improvement	Achievement				
	Very High	High	Intermediate	Low	Very Low
Improved Significantly	Excellent	Good	Good	Good	Acceptable
Improved	Excellent	Good	Good	Acceptable	Issue
Maintained	Excellent	Good	Acceptable	Issue	Concern
Declined	Good	Acceptable	Issue	Issue	Concern
Declined Significantly	Acceptable	Issue	Issue	Concern	Concern

Category Evaluation

The category evaluation is an average of the Overall Evaluation of the measures that make up the category. For the purpose of the calculation, consider an Overall Evaluation of Excellent to be 2, Good to be 1, Acceptable to be 0, Issue to be -1, and Concern to be -2. The simple average (mean) of these values rounded to the nearest integer produces the Category Evaluation value. This is converted back to a colour using the same scale above (e.g. 2=Excellent, 1=Good, 0=Intermediate, -1=Issue, -2=Concern)

Goal One: An excellent start to learning

Outcome: Children are reaching emotional, social, intellectual and physical development milestones and are ready for school.

- There are no required performance measures for this goal. Schools are encouraged to incorporate early development data available at the local level.

Comment on Results

Wheatland continues to work closely with Alberta Health to ensure students new to the school system have opportunities to meet their needs. Our students have access to speech, occupational health and counseling services. Staff has had a presentation with the EC Map Data gathered a few years ago and are working with the 5 for Life Coalition to promote early development needs in the community.

The 2012-13 school year was the first year of full day – every day kindergarten. Grade 1 teachers have provided positive feedback on this new initiative that is operating again this year.

Wheatland is looking into the creation of a preschool in the future should space become available

Strategies

- *Wheatland hosts an orientation evening in June to familiarize students and parents with the school. Parents are given a brief overview of the Wheatland Kindergarten program, an opportunity to complete kindergarten activities in each of the three classrooms, and presented with a Welcome to Kindergarten bag when they leave.*
- *Wheatland is hosting the 5 for Life Early Intervention Day on Saturday, May 10th where parents and children move through a variety of stations to assist with language readiness skills*
- *Wheatland provides a Kindergarten orientation morning for Strathmore Playschool students*

Goal Two: Success for Every Student

Outcome: *Students demonstrate proficiency in literacy and numeracy.*

Performance Measure	Results (in percentages)					Target	Evaluation			Targets		
	2009	2010	2011	2012	2013	2013	Achievement	Improvement	Overall	2014	2015	2016
Overall percentage of students in Grades 3, 6 and 9 who achieved the acceptable standard on Provincial Achievement Tests (overall cohort results).	93.3	83.3	88.0	85.3	82.5	Maintain	Intermediate	Maintained	Acceptable	Maintain	Maintain	Maintain
Overall percentage of students in Grades 3, 6 and 9 who achieved the standard of excellence on Provincial Achievement Tests (overall cohort results).	21.0	13.9	22.3	26.0	15.8	20.0	Intermediate	Maintained	Acceptable	Maintain	Maintain	Maintain

Comment on Results

Wheatland is pleased with the data from 2013, and looks to maintain the three year trend lines for the upcoming years. We are hopeful our changes in assessment practices and leadership initiatives will maintain and help improve trend lines in the future.

Strategies

- *Wheatland Elementary teachers use Developmental Reading Assessment Kits in Grades K-6 as a common assessment tool to evaluate student achievement in reading.*
- *Wheatland teachers are enhancing their language arts programs using, Daily 5, Words Their Way, Raz Kids, and Literacy Cafe*
- *Wheatland students are provided with individual reading feedback through the Accelerated Reading Program*
- *Teachers are using common mathematics resources from Pearson Math and Power of Ten to facilitate Program of Studies Objectives.*
- *Teachers are beginning to incorporate common writing assessments three times per year and to evaluate data with colleagues.*
- *Teachers are involved in assessment for and of learning methodologies and have begun experimenting with new ways to assess student learning.*
- *Wheatland Elementary Teachers are using "I Can" statements, exemplars, and portfolios to inform students and parents of learning objectives.*
- *Wheatland teachers have created Data Portfolios as a part of our Leader in Me initiative to assess growth over time*
- *Wheatland Teachers use the 6 Assessment Pillars to enhance student learning*
 - *Using effective grading practices*
 - *Determining curriculum essentials*
 - *Sharing outcomes and criteria with students*
 - *Using effective questioning*
 - *Providing descriptive feedback*
 - *Using appropriate self and peer reflection*
- *Wheatland continues to explore and refine practices around the new Division wide report card which is now in full implementation for the second year*
- *Parents are able to logon to Home Logic and view their child's academic progress*
- *Teachers are exploring new ways of gathering and recording information for the new reporting process*
- *Wheatland offers a Grade 6 Math Enrichment program to students who display exemplary math skills*
- *Wheatland teachers are provided with one hour common preps each week to work collaboratively in grade like teams*

Notes:

1. Aggregated PAT results are based upon a weighted average of percent meeting standards (Acceptable, Excellence). The weights are the number of students enrolled in each course. Courses included: English Language Arts (Grades 3, 6, 9), Science (Grades 6, 9), French Language Arts (Grades 3, 6, 9), Français (Grades 3, 6, 9). The percentages achieving the acceptable standard include the percentages achieving the standard of excellence.
2. Data values have been suppressed where the number of students or respondents is less than 6. Suppression is marked with an asterisk (*).
3. Please note that participation in Grade 9 Provincial Achievement Tests was substantially impacted by the flooding in June 2013. Caution should be used when interpreting trends over time for the province and those school authorities affected by the floods.

Outcome: *Students demonstrate citizenship and entrepreneurship.*

Performance Measure	Results (in percentages)					Target	Evaluation			Targets		
	2009	2010	2011	2012	2013	2013	Achievement	Improvement	Overall	2014	2015	2016
Percentage of teachers, parents and students who are satisfied that students model the characteristics of active citizenship.	86.0	87.6	86.3	87.9	88.8	Maintain	Very High	Maintained	Excellent	Maintain	Maintain	Maintain
Percentage of teachers and parents who agree that students are taught attitudes and behaviours that will make them successful at work when they finish school.	81.5	72.9	75.7	64.1	88.5	Maintain	Very High	Improved	Excellent	Maintain	Maintain	Maintain

Comment on Results

Wheatland strives to provide all students with opportunities to be active members of society. The Leader in Me initiative Wheatland began last year strives to promote leadership and entrepreneurship opportunities for students. Wheatland is currently in year 2 of the implementation led by the Lighthouse team , a group of staff dedicated to leading our 7 Habits Journey.

Strategies

- *Inform students at the Elementary age how school objectives are related to work situations*
- *Virtues Program – Teaching lifelong values and behaviours*
 - **Respect, Helpfulness, Kindness, Generosity, Courage, Honesty, Cooperation, Patience, Responsibility, and Honour.**
- *Wheatland Elementary will continue with the Virtues Program.*
- *Wheatland Elementary students will continue to be given opportunities to support citizenship, such as Jump into Jammies, Walk for a Cure, Recess Leaders, fundraising to support charities, and the yearly Food Bank Drive.*
- *Wheatland operates a Grade 6 Student Leadership Council (SLC). The council has an elected student executive and supports the following school initiatives; Safety Patrol, Lunch Helpers, Milk Program, Citizenship Community Service Group, Active Living Helpers, Maintenance Leadership, and Morning Announcements*
- *The Wheatland School Council is willing to have student leadership presentation or information sharing at their meetings*
- **Leader in Me**
 - *Wheatland staff began Leader in Me training based on Stephen Covey's 7 Habit of Highly Effective People in August of 2012. Staff has been trained in the 7 Habits and is currently on year 2 of the 3 year implementation plan led by the school's Lighthouse Team. The Lighthouse team consists of representation from each grade level and school support staff*
 - **The 7 Habits: Be Proactive, Begin with the End in Mind, Put First Things First, Think Win-Win, Seek First to Understand Then to be Understood, Synergize, Sharpen the Saw**
- *Partnerships have been established between the Wheatland Student Leadership Council and the Calgary Educational Partnership Foundation (CEPF) and the Strathmore High School Student Leadership Council.*

Note: Data values have been suppressed where the number of students or respondents is less than 6. Suppression is marked with an asterisk (*).

Goal Three: Quality teaching and school leadership

Outcome: Teacher preparation and professional growth focus on the competencies needed to help students learn. Effective learning and teaching is achieved through collaborative leadership.

Performance Measure	Results (in percentages)					Target	Evaluation			Targets		
	2009	2010	2011	2012	2013	2013	Achievement	Improvement	Overall	2014	2015	2016
Percentage of teachers, parents and students satisfied with the opportunity for students to receive a broad program of studies including fine arts, career, technology, and health and physical education.	82.8	74.3	76.5	85.5	83.7	Maintain	Very High	Maintained	Excellent	Maintain	Maintain	Maintain

Comment on Results

Wheatland supports a broad range of programs for our students. Currently we do not offer language programming other than English language arts. Due to cutbacks over the past few years our focus has been on maintaining acceptable class size numbers.

Strategies

- Continue to enhance technology services for students and teachers; Activboards have been installed in all of our classrooms
- Wheatland currently has four mobile labs, each of the Division II classrooms shares the mobile technology while Division I students use the computer lab. Our pupil to computer ratio sits at about 2.5:1.
- Ipad and Ipod technologies are used throughout the building, with about 20 devices currently in use
- Provide continued opportunities for students to take part in school fine arts activities such as Musicals, Choir, etc.
 - Wheatland supports 4-5 outside Art Performances each year
 - Wheatland purchased additional musical instruments to support in class instruction
- Ensure all timetables indicate Music as a subject rather than the broader category Fine Arts
- Continue to provide a PE specialist to provide students with a well-rounded daily PE program
- Wheatland supports an Active Living and Healthy Eating program
 - All students Grades 1-6 receive Daily PE instruction
 - Grades 1-6 intramural program
 - Extracurricular sports such as volleyball, badminton, and basketball
 - "Big Crunch Day" – all students share an apple at an assembly to promote healthy eating
- Continue to provide job-embedded common collaborative opportunities for grade-like teams to promote effective learning and teaching

Note: Data values have been suppressed where the number of students or respondents is less than 6. Suppression is marked with an asterisk (*).

Goal Four: Engaged and effective governance

Outcome: The education system demonstrates collaboration and engagement.

Performance Measure	Results (in percentages)					Target	Evaluation			Targets		
	2009	2010	2011	2012	2013	2013	Achievement	Improvement	Overall	2014	2015	2016
Percentage of teachers and parents satisfied with parental involvement in decisions about their child's education.	80.5	82.8	83.0	79.1	86.9	Maintain	Very High	Maintained	Excellent	Maintain	Maintain	Maintain
Percentage of teachers, parents and students satisfied with the overall quality of basic education.	89.8	91.4	97.9	93.4	93.0	Maintain	Very High	Maintained	Excellent	Maintain	Maintain	Maintain

Comment on Results

Wheatland strives to be a forward thinking educational environment. We are continually searching for new ways of gathering parental input and ensuring parent suggestions are considered.

Our website provides a wealth of information for parents, students and the community.

Strategies

- Active School Council where all parents are able to provide input into the direction of the school
- School Council Meeting times are discussed annually to accommodate busy families and babysitting is provided by our grade 6 leadership students
- An introduction of the School Council at the Meet the Teacher night accompanied with parent volunteer events sign up for the year
- Yearly calendar available on school website
- Monthly newsletter for all families made available on the school website
- Surveys created for students, staff and parents as a base line for Wheatland's Leader in Me initiative
- Leader in Me information notices have been sent home on each of the 7 Habits over the past 2 years along with a Leader in Me link on our website
- Strathmore Montessori Society parent meetings are held at our school on a monthly basis

Note: Data values have been suppressed where the number of students or respondents is less than 6. Suppression is marked with an asterisk (*).

Outcome: Students and communities have access to safe and healthy learning environments.

Performance Measure	Results (in percentages)					Target	Evaluation			Targets		
	2009	2010	2011	2012	2013	2013	Achievement	Improvement	Overall	2014	2015	2016
Percentage of teacher, parent and student agreement that: students are safe at school, are learning the importance of caring for others, are learning respect for others and are treated fairly in school.	90.8	92.8	91.0	95.2	90.7	Maintain	Very High	Maintained	Excellent	Maintain	Maintain	Maintain
Percentage of teachers, parents and students indicating that their school and schools in their jurisdiction have improved or stayed the same the last three years.	88.1	83.1	93.6	84.8	92.3	Maintain	Very High	Improved	Excellent	Maintain	Maintain	Maintain

Comment on Results

Wheatland is extremely pleased with the data on the level of basic education and the importance of a safe and caring school, and strives to ensure all students are receiving the best possible education.

Wheatland prides itself on providing students with a safe and caring environment for students, staff and parents. Regular communication with the School Council ensures parent and student needs are being met.

Strategies

- *Leader in Me information sharing and language at assemblies, through announcements and Grade 6 Leadership Students*
- *Address cyber-bullying and internet safety*
- *Review and revise, as necessary, the Crisis Response Manual*
- *Continue to practice and enforce safety protocols such as Fire Drills and Lock Down Procedures*
- *Grade 6 AMA Safety Patrollers cross students each and every morning*
- *Sign in sheets and nametags at the office for parents and visitors*

Note: Data values have been suppressed where the number of students or respondents is less than 6. Suppression is marked with an asterisk (*).

APPENDIX – Measure Details

The following pages include tables and graphs that provide detailed data for the performance measures. Schools may include these under each measure/outcome to provide context and help in interpreting the results.

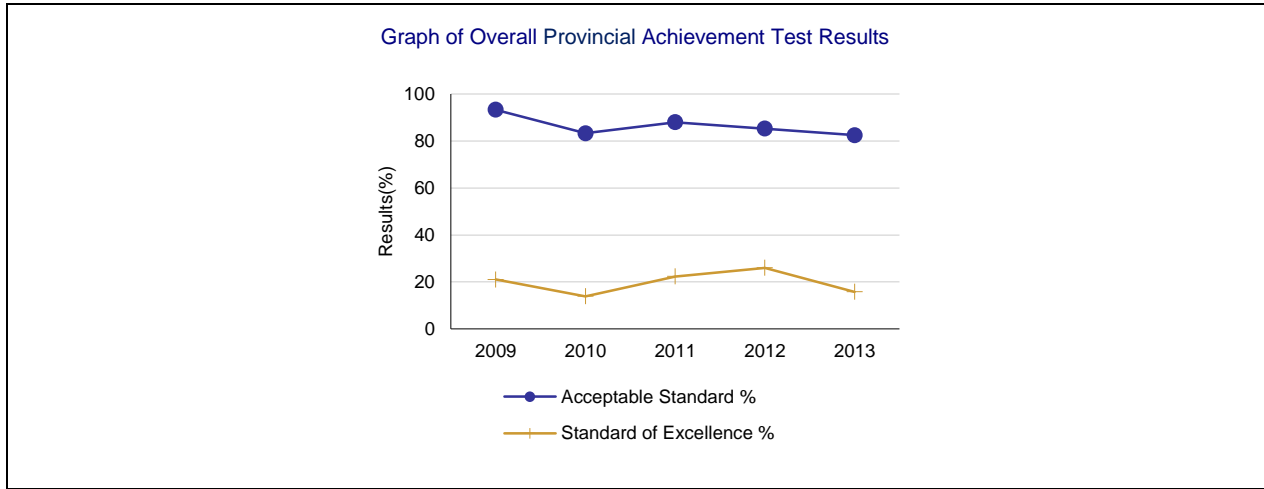
Provincial Achievement Test Results – Measure Details

PAT Course by Course Results by Number Enrolled.													
		Results (in percentages)										Target	
		2009		2010		2011		2012		2013		2013	
		A	E	A	E	A	E	A	E	A	E	A	E
English Language Arts 3	School	91.5	21.3	81.8	16.4	87.7	17.5	93.2	22.7	86.9	3.3	90	20
	Authority	84.4	18.2	83.9	16.1	87.8	15.7	83.3	18.5	84.0	11.2		
	Province	81.3	18.2	81.6	19.5	81.8	17.5	81.9	20.4	81.5	17.8		
Mathematics 3	School	n/a	n/a	n/a	n/a	87.7	31.6	81.8	25.0	70.5	19.7	85	25
	Authority	n/a	n/a	n/a	n/a	82.7	23.2	76.4	25.0	78.1	24.2		
	Province	n/a	n/a	n/a	n/a	77.4	26.0	76.8	25.5	76.5	25.5		
English Language Arts 6	School	97.2	19.4	86.7	15.6	91.5	15.3	79.2	18.9	78.2	21.8	85	25
	Authority	83.3	16.7	87.4	19.1	86.6	17.1	83.7	15.3	82.8	16.1		
	Province	81.8	18.9	83.3	18.9	83.0	18.5	82.7	17.8	82.5	16.3		
Mathematics 6	School	n/a	n/a	n/a	n/a	89.8	23.7	86.8	28.3	94.5	32.7	90	25
	Authority	n/a	n/a	n/a	n/a	76.8	14.3	73.9	11.5	74.3	15.6		
	Province	n/a	n/a	n/a	n/a	73.7	17.8	74.7	16.6	73.0	16.4		
Science 6	School	91.7	22.2	81.8	9.1	84.7	33.9	84.9	35.8	81.8	23.6	85	25
	Authority	78.6	20.0	76.4	21.6	78.1	18.6	76.6	22.5	75.6	22.3		
	Province	76.5	24.8	76.8	26.4	76.2	25.0	77.8	28.2	77.5	25.9		
Social Studies 6	School	n/a	n/a	66.7	2.2	67.8	11.9	75.5	13.2	61.8	10.9	80	15
	Authority	n/a	n/a	65.5	10.9	67.1	12.9	68.2	13.4	71.5	17.7		
	Province	n/a	n/a	71.0	16.4	71.1	18.5	73.2	19.5	72.7	19.0		

Note: Data values have been suppressed where the number of students or respondents is less than 6. Suppression is marked with an asterisk (*).

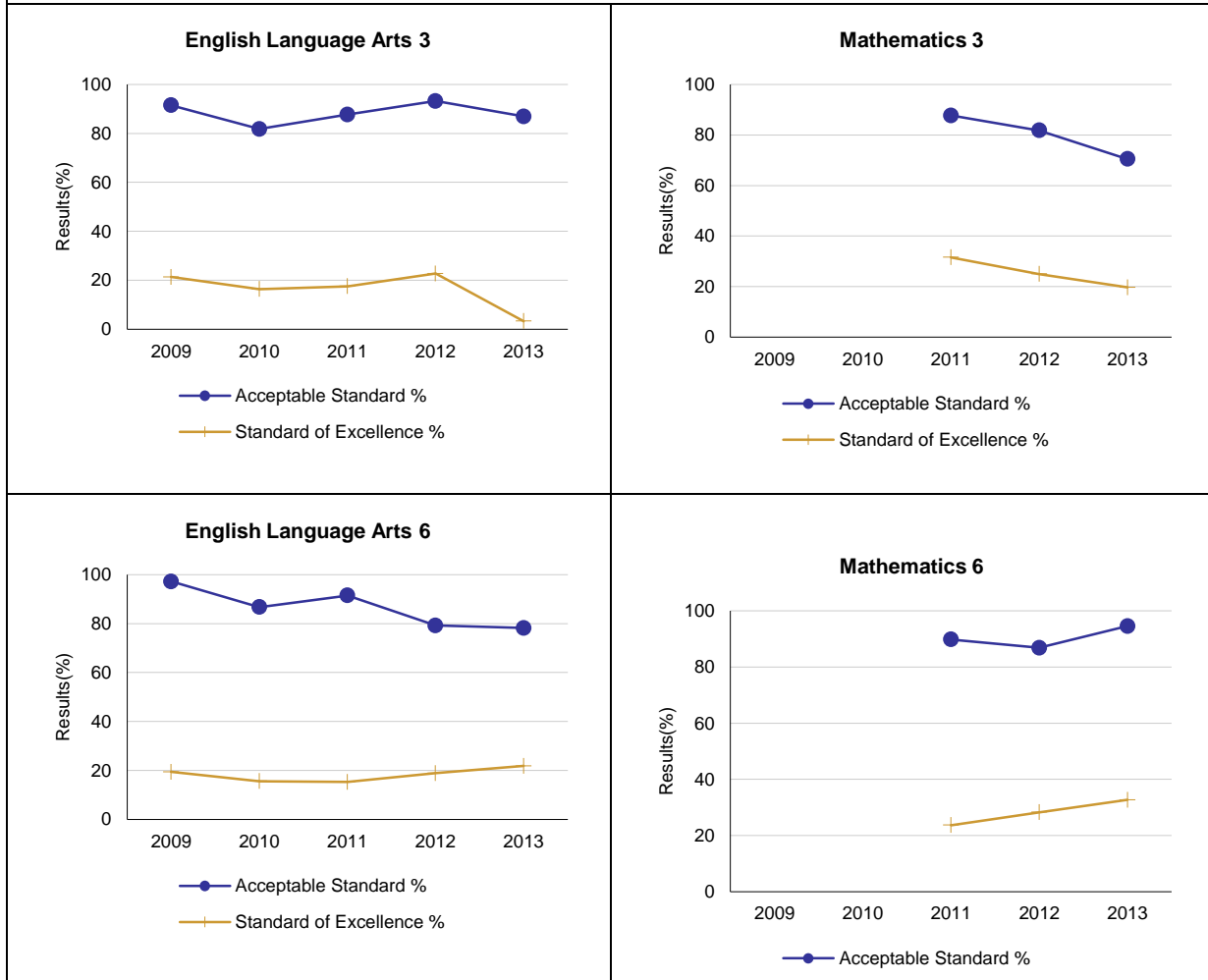
"A" = Acceptable; "E" = Excellence — the percentages achieving the acceptable standard include the percentages achieving the standard of excellence.

Please note that participation in Grade 9 Provincial Achievement Tests was substantially impacted by the flooding in June 2013. Caution should be used when interpreting trends over time for the province and those school authorities affected by the floods.



Note: Please note that participation in Grade 9 Provincial Achievement Tests was substantially impacted by the flooding in June 2013. Caution should be used when interpreting trends over time for the province and those school authorities affected by the floods.

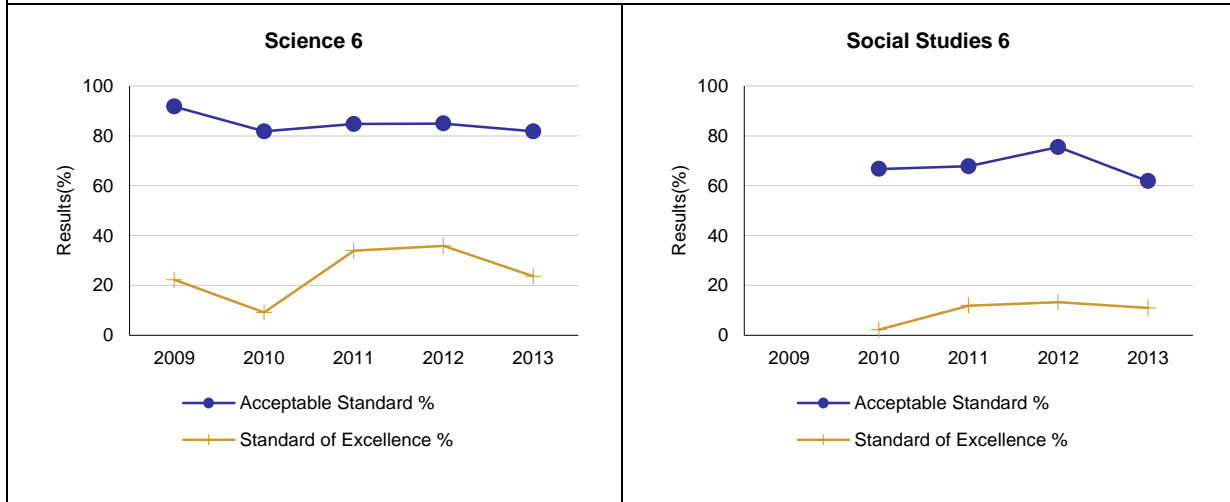
Graph of Provincial Achievement Test Results by Course



Note: Data values have been suppressed where the number of students or respondents is less than 6. Suppression is marked with an asterisk (*).

Please note that participation in Grade 9 Provincial Achievement Tests was substantially impacted by the flooding in June 2013. Caution should be used when interpreting trends over time for the province and those school authorities affected by the floods.

Graph of Provincial Achievement Test Results by Course



Note: Data values have been suppressed where the number of students or respondents is less than 6. Suppression is marked with an asterisk (*).

Please note that participation in Grade 9 Provincial Achievement Tests was substantially impacted by the flooding in June 2013. Caution should be used when interpreting trends over time for the province and those school authorities affected by the floods.

PAT Results Course By Course Summary By Enrolled With Measure Evaluation

		Wheatland Elementary School						Alberta				
		Achievement	Improvement	Overall	2013		Prev 3 Yr Avg		2013		Prev 3 Yr Avg	
Course	Measure				N	%	N	%	N	%	N	%
English Language Arts 3	Acceptable Standard	Intermediate	Maintained	Acceptable	61	86.9	52	87.6	46,095	81.5	43,231	81.8
	Standard of Excellence	Very Low	Declined Significantly	Concern	61	3.3	52	18.9	46,095	17.8	43,231	19.2
Mathematics 3	Acceptable Standard	n/a	Declined	n/a	61	70.5	51	84.8	46,041	76.5	43,823	77.1
	Standard of Excellence	n/a	Declined	n/a	61	19.7	51	28.3	46,041	25.5	43,823	25.8
English Language Arts 6	Acceptable Standard	Low	Declined	Issue	55	78.2	52	85.8	44,141	82.5	43,401	83.0
	Standard of Excellence	High	Maintained	Good	55	21.8	52	16.6	44,141	16.3	43,401	18.4
Mathematics 6	Acceptable Standard	n/a	Improved	n/a	55	94.5	56	88.3	44,089	73.0	43,355	74.2
	Standard of Excellence	n/a	Maintained	n/a	55	32.7	56	26.0	44,089	16.4	43,355	17.2
Science 6	Acceptable Standard	Intermediate	Maintained	Acceptable	55	81.8	52	83.8	44,138	77.5	43,341	76.9
	Standard of Excellence	Intermediate	Maintained	Acceptable	55	23.6	52	26.3	44,138	25.9	43,341	26.5
Social Studies 6	Acceptable Standard	Low	Maintained	Issue	55	61.8	52	70.0	43,914	72.7	43,436	71.8
	Standard of Excellence	Low	Maintained	Issue	55	10.9	52	9.1	43,914	19.0	43,436	18.1

Note: Data values have been suppressed where the number of students or respondents is less than 6. Suppression is marked with an asterisk (*).

Achievement Evaluation is not calculated for courses that do not have sufficient data available, either due to too few jurisdictions offering the course or because of changes in tests.

Please note that participation in Grade 9 Provincial Achievement Tests was substantially impacted by the flooding in June 2013. Caution should be used when interpreting trends over time for the province and those school authorities affected by the floods.

Measure Evaluation Reference - Achievement Evaluation

Achievement evaluation is based upon a comparison of Current Year data to a set of standards which remain consistent over time. The Standards are calculated by taking the 3 year average of baseline data for each measure across all school jurisdictions and calculating the 5th, 25th, 75th, and 95th percentiles. Once calculated, these standards remain in place from year to year to allow for consistent planning and evaluation.

The table below shows the range of values defining the 5 achievement evaluation levels for each measure.

Course	Measure	Very Low	Low	Intermediate	High	Very High
English Language Arts 3	Acceptable Standard	0.00 - 72.53	72.53 - 80.49	80.49 - 89.12	89.12 - 93.04	93.04 - 100.00
	Standard of Excellence	0.00 - 6.06	6.06 - 11.35	11.35 - 16.93	16.93 - 20.27	20.27 - 100.00
French Language Arts 3	Acceptable Standard	0.00 - 60.68	60.68 - 77.74	77.74 - 88.22	88.22 - 94.87	94.87 - 100.00
	Standard of Excellence	0.00 - 3.31	3.31 - 8.38	8.38 - 17.31	17.31 - 25.31	25.31 - 100.00
English Language Arts 6	Acceptable Standard	0.00 - 67.95	67.95 - 78.40	78.40 - 86.09	86.09 - 91.37	91.37 - 100.00
	Standard of Excellence	0.00 - 6.83	6.83 - 11.65	11.65 - 17.36	17.36 - 22.46	22.46 - 100.00
French Language Arts 6	Acceptable Standard	0.00 - 41.69	41.69 - 73.54	73.54 - 92.32	92.32 - 97.93	97.93 - 100.00
	Standard of Excellence	0.00 - 2.72	2.72 - 8.13	8.13 - 15.29	15.29 - 23.86	23.86 - 100.00
Science 6	Acceptable Standard	0.00 - 60.36	60.36 - 78.51	78.51 - 86.46	86.46 - 90.64	90.64 - 100.00
	Standard of Excellence	0.00 - 11.74	11.74 - 17.42	17.42 - 25.34	25.34 - 34.31	34.31 - 100.00
Social Studies 6	Acceptable Standard	0.00 - 58.97	58.97 - 68.15	68.15 - 76.62	76.62 - 83.55	83.55 - 100.00
	Standard of Excellence	0.00 - 7.30	7.30 - 12.45	12.45 - 19.08	19.08 - 30.09	30.09 - 100.00
English Language Arts 9	Acceptable Standard	0.00 - 63.55	63.55 - 75.66	75.66 - 83.70	83.70 - 90.27	90.27 - 100.00
	Standard of Excellence	0.00 - 5.96	5.96 - 9.43	9.43 - 14.72	14.72 - 20.46	20.46 - 100.00
English Lang Arts 9 KAE	Acceptable Standard	0.00 - 29.97	29.97 - 53.86	53.86 - 76.19	76.19 - 91.85	91.85 - 100.00
	Standard of Excellence	0.00 - 0.00	0.00 - 0.30	0.30 - 10.00	10.00 - 20.31	20.31 - 100.00
French Language Arts 9	Acceptable Standard	0.00 - 67.59	67.59 - 81.33	81.33 - 92.06	92.06 - 97.26	97.26 - 100.00
	Standard of Excellence	0.00 - 1.67	1.67 - 6.81	6.81 - 17.11	17.11 - 28.68	28.68 - 100.00
Mathematics 9 KAE	Acceptable Standard	0.00 - 28.14	28.14 - 53.85	53.85 - 75.83	75.83 - 94.44	94.44 - 100.00
	Standard of Excellence	0.00 - 0.00	0.00 - 6.07	6.07 - 20.43	20.43 - 31.67	31.67 - 100.00
Science 9	Acceptable Standard	0.00 - 50.57	50.57 - 60.14	60.14 - 72.50	72.50 - 76.89	76.89 - 100.00
	Standard of Excellence	0.00 - 3.39	3.39 - 6.71	6.71 - 11.81	11.81 - 15.85	15.85 - 100.00
Science 9 KAE	Acceptable Standard	0.00 - 38.75	38.75 - 59.30	59.30 - 78.33	78.33 - 87.58	87.58 - 100.00
	Standard of Excellence	0.00 - 0.00	0.00 - 7.47	7.47 - 21.41	21.41 - 40.82	40.82 - 100.00
Social Studies 9	Acceptable Standard	0.00 - 56.26	56.26 - 62.27	62.27 - 74.04	74.04 - 79.85	79.85 - 100.00
	Standard of Excellence	0.00 - 10.03	10.03 - 12.78	12.78 - 19.76	19.76 - 24.03	24.03 - 100.00
Social Studies 9 KAE	Acceptable Standard	0.00 - 38.79	38.79 - 53.82	53.82 - 72.42	72.42 - 84.88	84.88 - 100.00
	Standard of Excellence	0.00 - 0.00	0.00 - 5.71	5.71 - 17.19	17.19 - 36.26	36.26 - 100.00

Notes:

The range of values at each evaluation level is interpreted as greater than or equal to the lower value, and less than the higher value. For the Very High evaluation level, values range from greater than or equal to the lower value to 100%.

Achievement Evaluation is not calculated for courses that do not have sufficient data available, either due to too few jurisdictions offering the course or because of changes in tests.

Improvement Table

For each jurisdiction, improvement evaluation consists of comparing the Current Year result for each measure with the previous three-year average. A chi-square statistical test is used to determine the significance of the improvement. This test takes into account the size of the jurisdiction in the calculation to make improvement evaluation fair across jurisdictions of different sizes.

The table below shows the definition of the 5 improvement evaluation levels based upon the chi-square result.

Evaluation Category	Chi-Square Range
Declined Significantly	3.84 + (current < previous 3-year average)
Declined	1.00 - 3.83 (current < previous 3-year average)
Maintained	less than 1.00
Improved	1.00 - 3.83 (current > previous 3-year average)
Improved Significantly	3.84 + (current > previous 3-year average)

Overall Evaluation Table

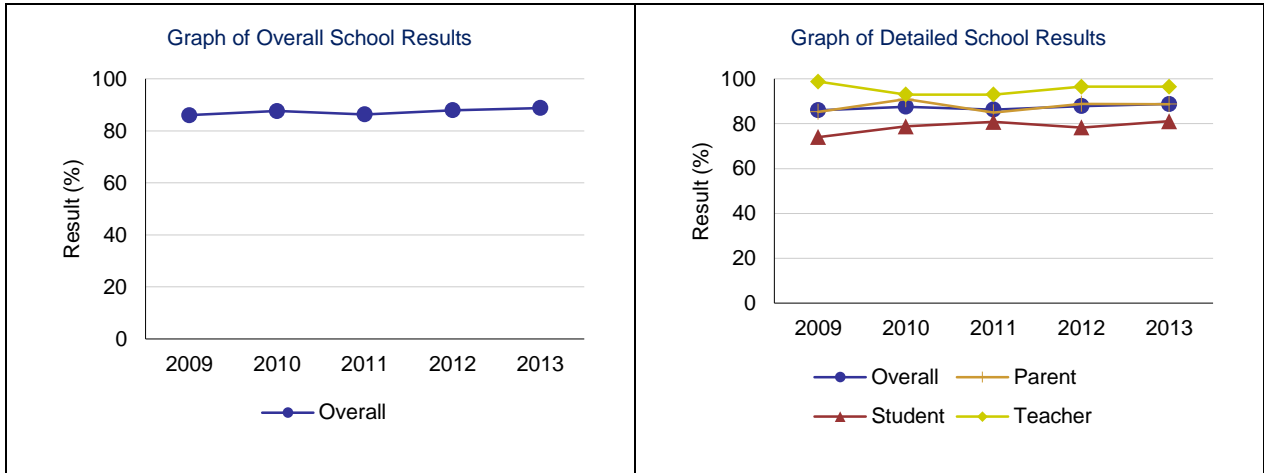
The overall evaluation combines the Achievement Evaluation and the Improvement Evaluation. The table below illustrates how the Achievement and Improvement evaluations are combined to get the overall evaluation.

	Achievement				
	Very High	High	Intermediate	Low	Very Low
Improved Significantly	Excellent	Good	Good	Good	Acceptable
Improved	Excellent	Good	Good	Acceptable	Issue
Maintained	Excellent	Good	Acceptable	Issue	Concern
Declined	Good	Acceptable	Issue	Issue	Concern
Declined Significantly	Acceptable	Issue	Issue	Concern	Concern

Citizenship – Measure Details

Percentage of teachers, parents and students who are satisfied that students model the characteristics of active citizenship.

	School					Authority					Province				
	2009	2010	2011	2012	2013	2009	2010	2011	2012	2013	2009	2010	2011	2012	2013
Overall	86.0	87.6	86.3	87.9	88.8	77.7	79.4	80.7	81.8	83.6	80.3	81.4	81.9	82.5	83.4
Teacher	98.8	93.0	93.0	96.5	96.5	93.1	92.7	94.9	93.9	94.5	91.8	93.0	92.7	93.1	93.6
Parent	85.3	90.9	85.0	88.9	88.7	73.7	74.8	74.7	76.4	79.2	77.4	78.5	78.6	79.4	80.3
Student	74.0	78.8	80.8	78.3	81.1	66.3	70.7	72.5	75.1	77.2	71.8	72.7	74.5	75.0	76.2

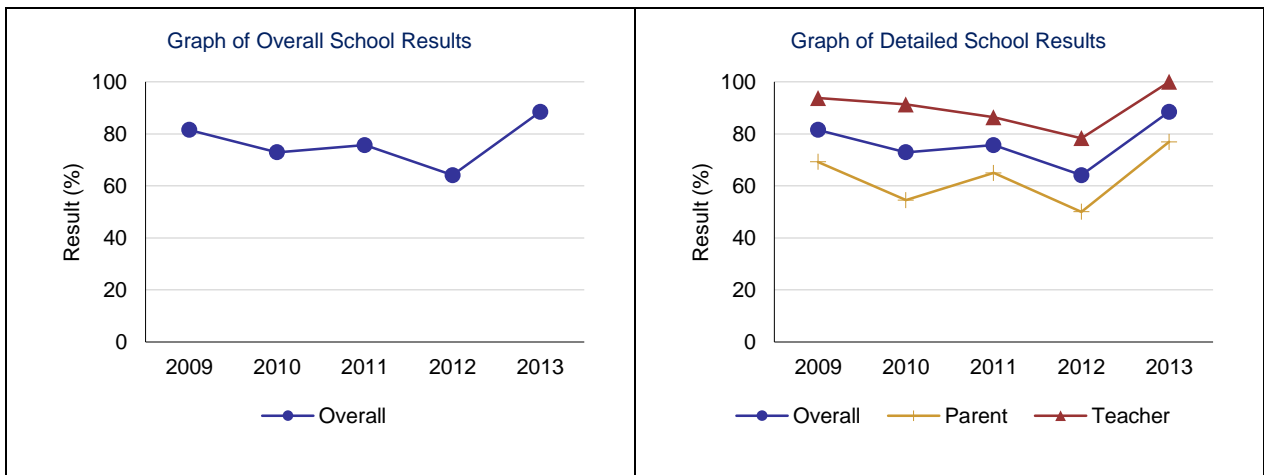


Note: Data values have been suppressed where the number of students or respondents is less than 6. Suppression is marked with an asterisk (*).

Work Preparation – Measure Details

Percentage of teachers and parents who agree that students are taught attitudes and behaviours that will make them successful at work when they finish school.

	School					Authority					Province				
	2009	2010	2011	2012	2013	2009	2010	2011	2012	2013	2009	2010	2011	2012	2013
Overall	81.5	72.9	75.7	64.1	88.5	81.0	79.5	82.1	78.2	84.2	79.6	79.9	80.1	79.7	80.3
Teacher	93.8	91.3	86.4	78.3	100.0	91.3	93.8	93.7	91.3	93.7	88.9	90.0	89.6	89.5	89.4
Parent	69.2	54.5	65.0	50.0	76.9	70.7	65.2	70.6	65.0	74.6	70.2	69.8	70.6	69.9	71.1

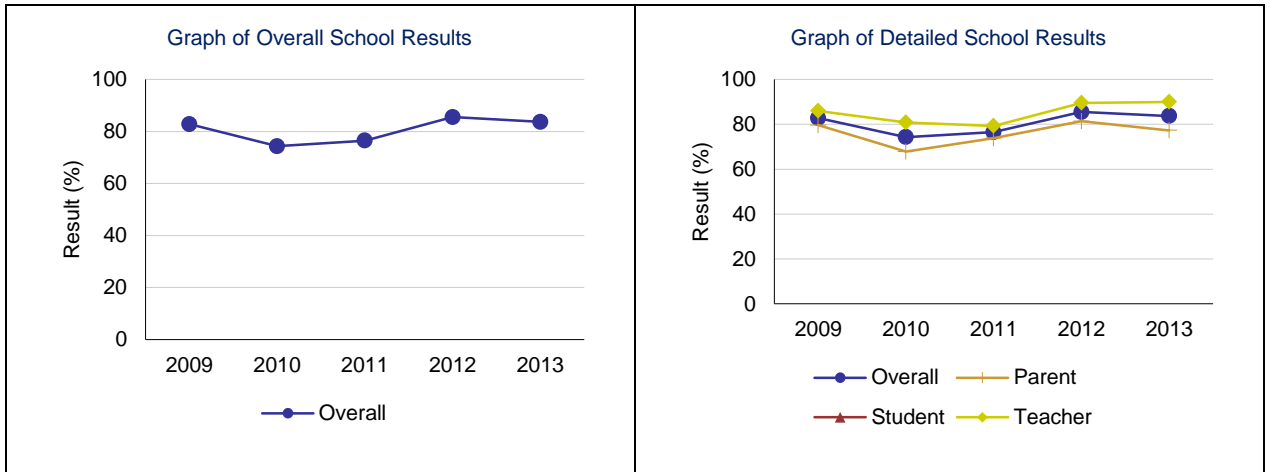


Note: Data values have been suppressed where the number of students or respondents is less than 6. Suppression is marked with an asterisk (*).

Program of Studies – Measure Details

Percentage of teachers, parents and students satisfied with the opportunity for students to receive a broad program of studies including fine arts, career, technology, and health and physical education.

	School					Authority					Province				
	2009	2010	2011	2012	2013	2009	2010	2011	2012	2013	2009	2010	2011	2012	2013
Overall	82.8	74.3	76.5	85.5	83.7	77.3	73.4	76.1	78.6	80.1	80.3	80.5	80.9	80.7	81.5
Teacher	86.0	80.9	79.3	89.6	90.0	85.8	83.1	85.5	86.6	87.0	86.8	87.7	87.6	87.3	87.9
Parent	79.7	67.8	73.8	81.4	77.3	73.0	69.2	71.4	73.4	78.1	78.7	78.0	78.3	78.1	78.9
Student	n/a	n/a	n/a	n/a	n/a	73.1	68.0	71.6	75.7	75.2	75.3	75.9	76.9	76.9	77.8

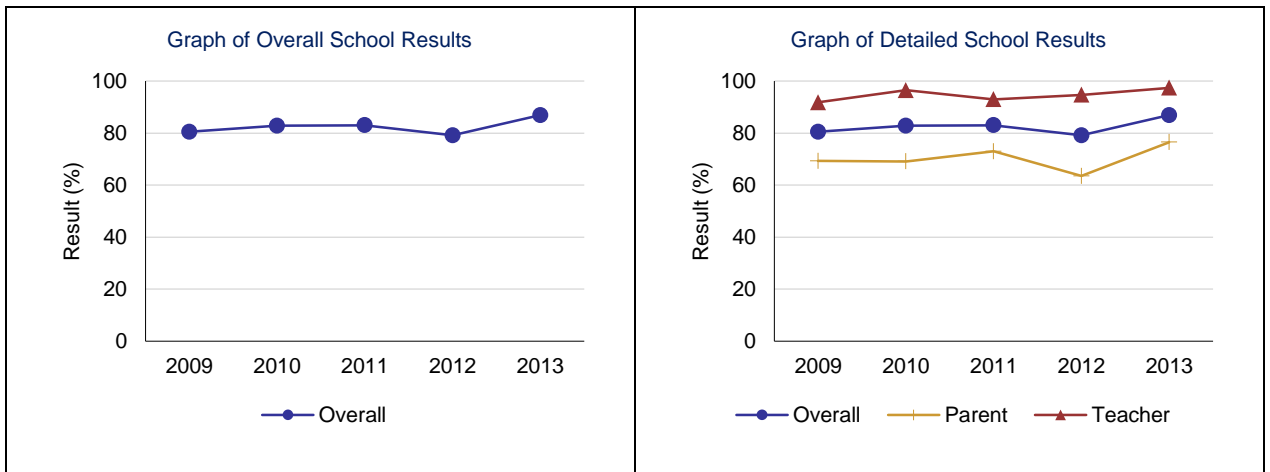


Note: Data values have been suppressed where the number of students or respondents is less than 6. Suppression is marked with an asterisk (*).

Parental Involvement – Measure Details

Percentage of teachers and parents satisfied with parental involvement in decisions about their child's education.

	School					Authority					Province				
	2009	2010	2011	2012	2013	2009	2010	2011	2012	2013	2009	2010	2011	2012	2013
Overall	80.5	82.8	83.0	79.1	86.9	79.4	77.2	77.9	81.4	80.8	80.1	80.0	79.9	79.7	80.3
Teacher	91.8	96.5	93.0	94.7	97.4	90.5	88.4	89.0	89.3	88.8	88.0	88.6	88.1	88.0	88.5
Parent	69.3	69.1	73.0	63.5	76.5	68.2	66.1	66.7	73.5	72.8	72.2	71.3	71.7	71.4	72.2

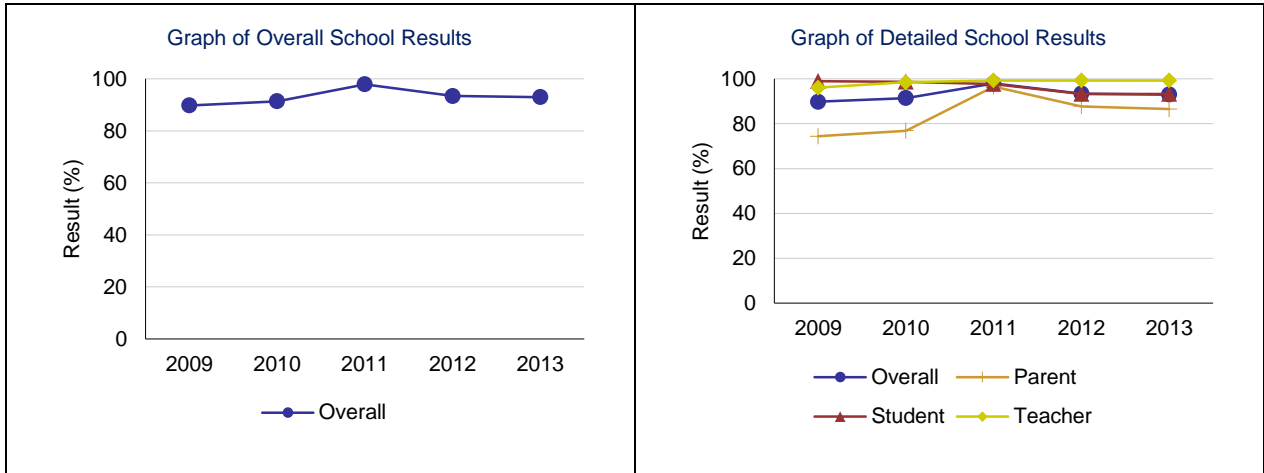


Note: Data values have been suppressed where the number of students or respondents is less than 6. Suppression is marked with an asterisk (*).

Education Quality – Measure Details

Percentage of teachers, parents and students satisfied with the overall quality of basic education.

	School					Authority					Province				
	2009	2010	2011	2012	2013	2009	2010	2011	2012	2013	2009	2010	2011	2012	2013
Overall	89.8	91.4	97.9	93.4	93.0	88.6	87.8	88.8	90.5	91.0	89.3	89.2	89.4	89.4	89.8
Teacher	96.1	98.5	99.3	99.3	99.3	95.3	96.9	98.2	97.6	96.7	95.3	95.6	95.5	95.4	95.7
Parent	74.4	76.9	96.6	87.7	86.5	82.9	79.3	81.4	84.7	86.7	84.4	83.9	84.2	84.2	84.9
Student	99.0	98.7	97.7	93.3	93.3	87.6	87.0	86.7	89.0	89.5	88.3	88.2	88.5	88.6	88.7

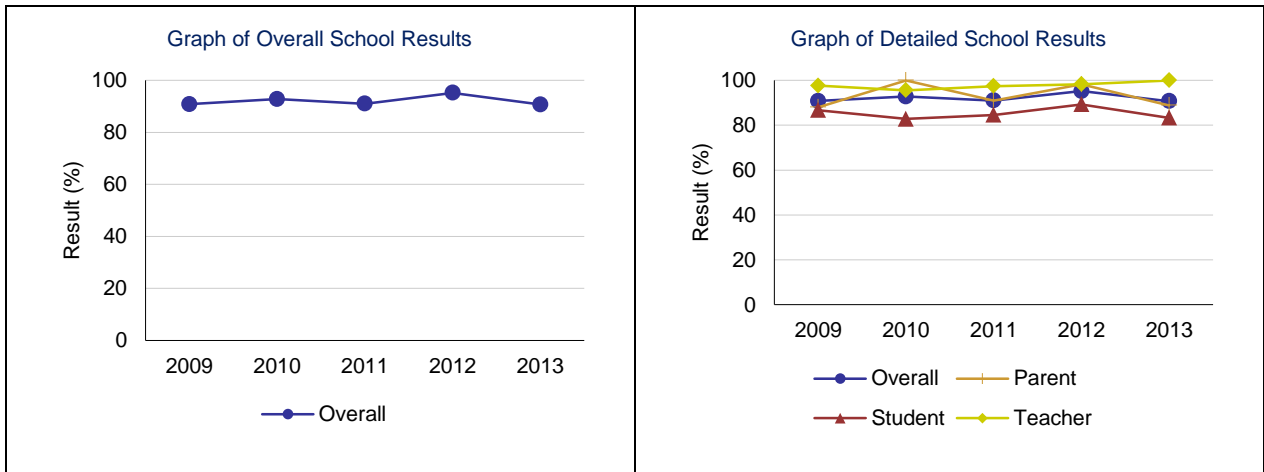


Note: Data values have been suppressed where the number of students or respondents is less than 6. Suppression is marked with an asterisk (*).

Safe and Caring – Measure Details

Percentage of teacher, parent and student agreement that: students are safe at school, are learning the importance of caring for others, are learning respect for others and are treated fairly in school.

	School					Authority					Province				
	2009	2010	2011	2012	2013	2009	2010	2011	2012	2013	2009	2010	2011	2012	2013
Overall	90.8	92.8	91.0	95.2	90.7	87.4	87.5	88.7	89.1	89.4	86.9	87.6	88.1	88.6	89.0
Teacher	97.6	95.6	97.4	98.3	100.0	95.8	95.4	97.4	95.9	95.7	93.8	94.4	94.5	94.8	95.0
Parent	88.0	100.0	91.0	98.2	88.9	85.7	85.2	86.4	86.9	87.5	85.3	86.1	86.6	87.4	87.8
Student	86.7	82.8	84.6	89.3	83.3	80.8	82.0	82.4	84.6	85.1	81.7	82.2	83.3	83.7	84.2

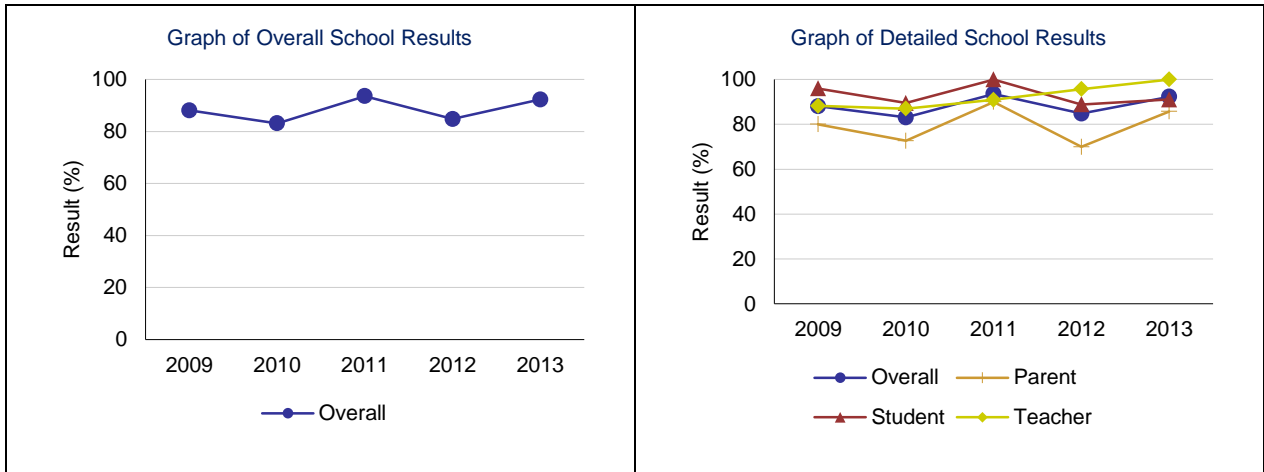


Note: Data values have been suppressed where the number of students or respondents is less than 6. Suppression is marked with an asterisk (*).

School Improvement – Measure Details

Percentage of teachers, parents and students indicating that their school and schools in their jurisdiction have improved or stayed the same the last three years.

	School					Authority					Province				
	2009	2010	2011	2012	2013	2009	2010	2011	2012	2013	2009	2010	2011	2012	2013
Overall	88.1	83.1	93.6	84.8	92.3	79.9	78.8	81.0	81.2	83.3	79.4	79.9	80.1	80.0	80.6
Teacher	88.2	87.0	90.9	95.7	100.0	83.4	85.3	86.1	86.4	86.8	78.2	80.8	80.1	81.1	80.9
Parent	80.0	72.7	90.0	70.0	85.7	76.6	71.7	75.8	71.6	77.2	78.1	77.0	77.3	76.2	77.9
Student	96.0	89.5	100.0	88.9	91.1	79.7	79.3	81.2	85.7	85.8	81.8	81.8	82.9	82.7	82.9



Note: Data values have been suppressed where the number of students or respondents is less than 6. Suppression is marked with an asterisk (*).