

---

# 3-Year Education Plan and Annual Education Results Report (AERR) for Wheatland Elementary School 2013 – 2014 – 2015



## Accountability Statement

The Education Plan for Wheatland Elementary the three years commencing August 30<sup>th</sup>, 2012 was prepared in accordance with the policies of Golden Hills School Division No. 75. This Education Plan aligns with the goals and priorities established by the jurisdiction and described in the Three Year Education Plan of Golden Hills School Division.

## Publication and Communication

- The Wheatland Elementary School Accountability Pillar results will be posted on the school website <http://wheatland.ghsd75.ca/>
- Input from the plan was gathered from staff and school council.

### Combined 2012 Accountability Pillar Overall Summary

Measure Category	Measure Category Evaluation	Measure	Wheatland Elementary School			Alberta			Measure Evaluation		
			Current Result	Prev Year Result	Prev 3 Year Average	Current Result	Prev Year Result	Prev 3 Year Average	Achievement	Improvement	Overall
Safe and Caring Schools	Excellent	Safe and Caring	95.2	91.0	91.5	88.6	88.1	87.5	Very High	Maintained	Excellent
Student Learning Opportunities	n/a	Program of Studies	85.5	76.5	77.9	80.7	80.9	80.6	Very High	Maintained	Excellent
		Education Quality	93.4	97.9	93.0	89.4	89.4	89.3	Very High	Maintained	Excellent
		Drop Out Rate	n/a	n/a	n/a	3.2	4.2	4.4	n/a	n/a	n/a
		High School Completion Rate (3 yr)	n/a	n/a	n/a	74.1	72.6	71.6	n/a	n/a	n/a
Student Learning Achievement (Grades K-9)	Excellent	PAT: Acceptable	85.3	88.0	88.2	79.1	79.3	78.9	High	Maintained	Good
		PAT: Excellence	26.0	22.3	19.1	20.9	19.6	19.1	Very High	Improved	Excellent
Student Learning Achievement (Grades 10-12)	n/a	Diploma: Acceptable	n/a	n/a	n/a	83.5	82.6	83.5	n/a	n/a	n/a
		Diploma: Excellence	n/a	n/a	n/a	18.6	18.7	18.7	n/a	n/a	n/a
		Diploma Exam Participation Rate (4+ Exams)	n/a	n/a	n/a	56.2	54.9	53.9	n/a	n/a	n/a
		Rutherford Scholarship Eligibility Rate (Revised)	n/a	n/a	n/a	61.5	59.6	58.0	n/a	n/a	n/a
Preparation for Lifelong Learning, World of Work, Citizenship	n/a	Transition Rate (6 yr)	n/a	n/a	n/a	58.4	59.3	59.5	n/a	n/a	n/a
		Work Preparation	64.1	75.7	76.7	79.7	80.1	79.9	Very Low	Declined	Concern
		Citizenship	87.9	86.3	86.6	82.5	81.9	81.2	Very High	Maintained	Excellent
Parental Involvement	Good	Parental Involvement	79.1	83.0	82.1	79.7	79.9	80.0	High	Maintained	Good
Continuous Improvement	Excellent	School Improvement	84.8	93.6	88.3	80.0	80.1	79.8	Very High	Maintained	Excellent

Notes:

1. PAT results are a weighted average of the percent meeting standards (Acceptable, Excellence) on Provincial Achievement Tests. The weights are the number of students enrolled in each course. Courses included: English Language Arts (Grades 3, 6, 9), Science (Grades 6, 9), French Language Arts (Grades 6, 9), Français (Grades 6, 9).
2. Diploma results are a weighted average of percent meeting standards (Acceptable, Excellence) on Diploma Examinations. The weights are the number of students writing the Diploma Examination for each course. Courses included: English Language Arts 30-1, English Language Arts 30-2, French Language Arts 30-1, Français 30-1, Pure Mathematics 30, Applied Mathematics 30, Biology 30, Science 30.
3. Overall evaluations can only be calculated if both improvement and achievement evaluations are available.
4. The subsequent pages include evaluations for each performance measure. If jurisdictions desire not to present this information for each performance measure in the subsequent pages, please include a reference to this overall summary page for each performance measure.
5. Data values have been suppressed where the number of students is less than 6. Suppression is marked with an asterisk (\*).

## Measure Evaluation Reference

### Achievement Evaluation

Achievement evaluation is based upon a comparison of Current Year data to a set of standards which remain consistent over time. The Standards are calculated by taking the 3 year average of baseline data for each measure across all school jurisdictions and calculating the 5th, 25th, 75th and 95th percentiles. Once calculated, these standards remain in place from year to year to allow for consistent planning and evaluation.

The table below shows the range of values defining the 5 achievement evaluation levels for each measure.

Measure	Very Low	Low	Intermediate	High	Very High
Safe and Caring	0.00 - 77.62	77.62 - 81.05	81.05 - 84.50	84.50 - 88.03	88.03 - 100.00
Program of Studies	0.00 - 66.31	66.31 - 72.65	72.65 - 78.43	78.43 - 81.59	81.59 - 100.00
Education Quality	0.00 - 80.94	80.94 - 84.23	84.23 - 87.23	87.23 - 89.60	89.60 - 100.00
Drop Out Rate	100.00 - 9.40	9.40 - 6.90	6.90 - 4.27	4.27 - 2.79	2.79 - 0.00
High School Completion Rate (3 yr)	0.00 - 57.03	57.03 - 62.36	62.36 - 73.88	73.88 - 81.79	81.79 - 100.00
PAT: Acceptable	0.00 - 65.53	65.53 - 78.44	78.44 - 85.13	85.13 - 89.49	89.49 - 100.00
PAT: Excellence	0.00 - 9.19	9.19 - 11.96	11.96 - 17.99	17.99 - 22.45	22.45 - 100.00
Diploma: Acceptable	0.00 - 74.42	74.42 - 83.58	83.58 - 88.03	88.03 - 92.35	92.35 - 100.00
Diploma: Excellence	0.00 - 10.31	10.31 - 15.67	15.67 - 20.27	20.27 - 23.77	23.77 - 100.00
Diploma Exam Participation Rate (4+ Exams)	0.00 - 31.10	31.10 - 44.11	44.11 - 55.78	55.78 - 65.99	65.99 - 100.00
Rutherford Scholarship Eligibility Rate (Revised)	0.00 - 43.18	43.18 - 49.83	49.83 - 59.41	59.41 - 70.55	70.55 - 100.00
Transition Rate (6 yr)	0.00 - 39.80	39.80 - 46.94	46.94 - 56.15	56.15 - 68.34	68.34 - 100.00
Work Preparation	0.00 - 66.92	66.92 - 72.78	72.78 - 77.78	77.78 - 86.13	86.13 - 100.00
Citizenship	0.00 - 66.30	66.30 - 71.63	71.63 - 77.50	77.50 - 81.08	81.08 - 100.00
Parental Involvement	0.00 - 70.76	70.76 - 74.58	74.58 - 78.50	78.50 - 82.30	82.30 - 100.00
School Improvement	0.00 - 65.25	65.25 - 70.85	70.85 - 76.28	76.28 - 80.41	80.41 - 100.00

#### Notes:

- 1) For all measures except Drop Out Rate: The range of values at each evaluation level is interpreted as greater than or equal to the lower value, and less than the higher value. For the Very High evaluation level, values range from greater than or equal to the lower value to 100%.
- 2) Drop Out Rate measure: As "Drop Out Rate" is inverse to most measures (i.e. lower values are "better"), the range of values at each evaluation level is interpreted as greater than the lower value and less than or equal to the higher value. For the Very High evaluation level, values range from 0% to less than or equal to the higher value.

### Improvement Table

For each jurisdiction, improvement evaluation consists of comparing the Current Year result for each measure with the previous three-year average. A chi-square statistical test is used to determine the significance of the improvement. This test takes into account the size of the jurisdiction in the calculation to make improvement evaluation fair across jurisdictions of different sizes.

The table below shows the definition of the 5 improvement evaluation levels based upon the chi-square result.

Evaluation Category	Chi-Square Range
Declined Significantly	3.84 + (current < previous 3-year average)
Declined	1.00 - 3.83 (current < previous 3-year average)
Maintained	less than 1.00
Improved	1.00 - 3.83 (current > previous 3-year average)
Improved Significantly	3.84 + (current > previous 3-year average)

### Overall Evaluation Table

The overall evaluation combines the Achievement Evaluation and the Improvement Evaluation. The table below illustrates how the Achievement and Improvement evaluations are combined to get the overall evaluation.

Improvement	Achievement				
	Very High	High	Intermediate	Low	Very Low
Improved Significantly	Excellent	Good	Good	Good	Acceptable
Improved	Excellent	Good	Good	Acceptable	Issue
Maintained	Excellent	Good	Acceptable	Issue	Concern
Declined	Good	Acceptable	Issue	Issue	Concern
Declined Significantly	Acceptable	Issue	Issue	Concern	Concern

### Category Evaluation

The category evaluation is an average of the Overall Evaluation of the measures that make up the category. For the purpose of the calculation, consider an Overall Evaluation of Excellent to be 2, Good to be 1, Acceptable to be 0, Issue to be -1, and Concern to be -2. The simple average (mean) of these values rounded to the nearest integer produces the Category Evaluation value. This is converted back to a colour using the same scale above (e.g. 2=Excellent, 1=Good, 0=Intermediate, -1=Issue, -2=Concern)

## Goal One: Success for Every Student

*Outcome: Students demonstrate proficiency in literacy and numeracy.*

Performance Measure	Results (in percentages)					Target <sup>1</sup>	Evaluation			Targets <sup>2</sup>		
	2008	2009	2010	2011	2012	2012	Achievement	Improvement	Overall	2013	2014	2015
Overall percentage of students in Grades 3, 6 and 9 who achieved the acceptable standard on Provincial Achievement Tests (overall cohort results).	86.2	93.3	83.3	88.0	85.3	Maintain	High	Maintained	Good	Maintain	Maintain	Maintain
Overall percentage of students in Grades 3, 6 and 9 who achieved the standard of excellence on Provincial Achievement Tests (overall cohort results).	19.6	21.0	13.9	22.3	26.0	Maintain	Very High	Improved	Excellent	Maintain	Maintain	Maintain

### Comment on Results

Wheatland is pleased with the data from 2012, especially the increase in achievement at the Standard of Excellence level, and looks to maintain the three year trend lines for the upcoming years. We are hopeful our changes in assessment practices are indicative of the upward trends.

### Strategies

- *Wheatland Elementary teachers use Developmental Reading Assessment Kits in Grades K-6 as a common assessment tool to evaluate student achievement in reading.*
- *Wheatland students are provided with individual reading feedback through the Accelerated Reading Program*
- *Teachers are using common mathematics resources from Pearson Math and Power of Ten to facilitate Program of Studies Objectives.*
- *Teachers are beginning to incorporate common writing assessments three times per year and to evaluate data with colleagues.*
- *Teachers are involved in assessment for and of learning methodologies and have begun experimenting with new ways to assess student learning.*
- *Wheatland Elementary Teachers are using "I Can" statements, exemplars, and portfolios to inform students and parents of learning objectives.*
- *Wheatland Teachers use the 6 Assessment Pillars to enhance student learning*
  - *Using effective grading practices*
  - *Determining curriculum essentials*
  - *Sharing outcomes and criteria with students*
  - *Using effective questioning*
  - *Providing descriptive feedback*
  - *Using appropriate self and peer reflection*
- *Wheatland piloted the new Division wide report card which is now in full implementation for the 2012-2013 school year*
- *Parents are able to logon to Home Logic and view their child's academic progress*
- *Teachers are exploring new ways of gathering and recording information for the new reporting process*
- *Wheatland teachers have been a part of the ongoing AISI professional development supported by GHSD*
- *Wheatland offers a Grade 6 Math Enrichment program to students who display exemplary math skills*

### Notes:

1. Aggregated PAT results are based upon a weighted average of percent meeting standards (Acceptable, Excellence). The weights are the number of students enrolled in each course. Courses included: English Language Arts (Grades 3, 6, 9), Science (Grades 6, 9), French Language Arts (Grades 6, 9), Français (Grades 6, 9). The percentages achieving the acceptable standard include the percentages achieving the standard of excellence.
2. Data values have been suppressed where the number of students is less than 6. Suppression is marked with an asterisk (\*).

*Outcome: Students develop competencies for success as engaged thinkers and ethical citizens with an entrepreneurial spirit.*

Performance Measure	Results (in percentages)					Target	Evaluation			Targets		
	2008	2009	2010	2011	2012	2012	Achievement	Improvement	Overall	2013	2014	2015
Percentage of teachers, parents and students who are satisfied that students model the characteristics of active citizenship.	88.1	86.0	87.6	86.3	87.9	Maintain	Very High	Maintained	Excellent	Maintain	Maintain	Maintain
Percentage of teachers and parents who agree that students are taught attitudes and behaviours that will make them successful at work when they finish school.	88.5	81.5	72.9	75.7	64.1	75	Very Low	Declined	Concern	75	75	75

**Comment on Results**

Wheatland strives to provide all students with opportunities to be active members of society. The above data suggests Wheatland students, parents, and staff needs to ensure objectives taught at the elementary level are related to the work situation.

**Strategies**

- *Identify the attitudes and behaviours that make students successful at work when they finish school and require schools to identify the ways and means that these are taught and developed. This information will be communicated more effectively to parents.*
- *Inform students at the Elementary age how school objectives are related to work situations*
- *Virtues Program – Teaching lifelong values and behaviours*
  - **Respect, Helpfulness, Kindness, Generosity, Courage, Honesty, Cooperation, Patience, Responsibility, and Honour.**
- *Wheatland Elementary will continue with the Virtues Program.*
- *Wheatland Elementary students will continue to be given opportunities to support citizenship, such as Jump into Jammies, Walk for a Cure, Recess Leaders, fundraising to support charities, and the yearly Food Bank Drive.*
- *Wheatland operates a Grade 6 Student Leadership Council (SLC). The council has an elected student executive and supports the following school initiatives; Safety Patrol, Lunch Helpers, Milk Program, Citizenship Community Service Group, Active Living Helpers, and Morning Announcements*
- **Leader in Me**
  - *Wheatland staff began Leader in Me training based on Stephen Covey’s 7 Habit of Highly Effective People in August of 2012. Staff will learn the habits before sharing them with students.*
  - **The 7 Habits: Be Proactive, Begin with the End in Mind, Put First Things First, Think Win-Win, Seek First to Understand, Then to be Understood, Synergize, Sharpen the Saw**

## Goal Two: High Quality Education through Collaboration and Innovation

*Outcome: Effective learning and teaching within caring, respectful, safe and healthy environments.*

Performance Measure	Results (in percentages)					Target	Evaluation			Targets		
	2008	2009	2010	2011	2012	2012	Achievement	Improvement	Overall	2013	2014	2015
Percentage of teachers, parents and students satisfied with the opportunity for students to receive a broad program of studies including fine arts, career, technology, and health and physical education.	79.1	82.8	74.3	76.5	85.5	Maintain	Very High	Maintained	Excellent	Maintain	Maintain	Maintain
Percentage of teachers, parents and students satisfied with the overall quality of basic education.	94.8	89.8	91.4	97.9	93.4	Maintain	Very High	Maintained	Excellent	Maintain	Maintain	Maintain
Percentage of teacher, parent and student agreement that: students are safe at school, are learning the importance of caring for others, are learning respect for others and are treated fairly in school.	92.4	90.8	92.8	91.0	95.2	Maintain	Very High	Maintained	Excellent	Maintain	Maintain	Maintain

### Comment on Results

Wheatland supports a broad range of programs for our students. Currently we do not offer language programming other than English language arts. Due to cutbacks over the past few years our focus has been on maintaining acceptable class size numbers.

Wheatland is extremely pleased with the data on the level of basic education and the importance of a safe and caring school, and strives to ensure all students are receiving the best possible education.

Wheatland prides itself on providing students with a safe and caring environment for students, staff and parents. Regular communication with the School Council ensures parent and student needs are being met.

### Strategies

- Continue to enhance technology services for students and teachers; Activboards have been installed in all of our classrooms
- A fourth mobile lab has been added to school for the 2012- 2013 school year, each of the Division II classrooms shares the mobile technology while Division I students use the computer lab. Our pupil to computer ratio sits at about 2.5:1.
- Ipad and Ipod technologies are used throughout the building, with about 20 devices currently in use
- Provide continued opportunities for students to take part in school fine arts activities such as Musicals, Choir, etc.
  - Wheatland supports 4-5 outside Art Performances each year
  - Wheatland purchased additional musical instruments to support in class instruction
- Ensure all timetables indicate Music as a subject rather than the broader category Fine Arts
- Continue to provide a PE specialist to provide students with a well-rounded daily PE program
- Wheatland supports an Active Living and Healthy Eating program
  - All students Grades 1-6 receive Daily PE instruction
  - Grades 1-6 intramural program
  - Extracurricular sports such as volleyball, badminton, and basketball
- Continue to support the virtue education program at assemblies, through announcements and Grade 6 Leadership Students.
- Address cyber-bullying – a relatively new phenomenon – and internet safety.
- Review and revise, as necessary, the Crisis Response Manual.
- Continue to practice and enforce safety protocols such as Fire Drills and Lock Down Procedures

- *School Safety Patrol maintained*
- *Maintain effective outdoor teacher playground supervision; at least three outdoor supervisors at all times*
- *Support School Fuel Breakfast Program, which currently serves between 45 – 70 students each morning*
- *Parent Volunteers are screened through Criminal Record and Family Service Checks*
- *Wheatland provides student and parent access to a Family School Liaison Worker (counsellor)*
- *Coordination with organizations such as the Crisis Shelter and Family Services*
- *Work alongside the Strathmore Before and After School Program to ensure students arrive and leave safely*

Outcome: The education system demonstrates leadership and collaboration.

Performance Measure	Results (in percentages)					Target	Evaluation			Targets		
	2008	2009	2010	2011	2012		2012	Achievement	Improvement	Overall	2013	2014
Percentage of teachers and parents satisfied with parental involvement in decisions about their child's education.	81.2	80.5	82.8	83.0	79.1	Maintain	High	Maintained	Good	Maintain	Maintain	Maintain
Percentage of teachers, parents and students indicating that their school and schools in their jurisdiction have improved or stayed the same the last three years.	97.3	88.1	83.1	93.6	84.8	Maintain	Very High	Maintained	Excellent	Maintain	Maintain	Maintain

<p><b>Comment on Results</b></p> <p>Wheatland strives to be a forward thinking educational environment. We are continually searching for new ways of gathering parental input and ensuring parent suggestions are considered.</p> <p>Our new website is up and running and although it continues to be a work in progress, we are seeing many families make use of the site.</p>
<p><b>Strategies</b></p> <ul style="list-style-type: none"> <li>• Global AISI Assessment Project for the entire School Division with Teacher support in each school</li> <li>• Active School Council where all parents are able to provide input into the direction of the school</li> <li>• Changes in School Council Meeting times to accommodate parents, and introduction of the School Council at the Meet the Teacher night accompanied with events sign up for the year</li> <li>• Yearly calendar available on school website</li> <li>• Monthly newsletter for all families made available on the school website</li> </ul>

Note: Data values have been suppressed where the number of respondents is less than 6. Suppression is marked with an asterisk (\*).



**Goal Three: Success for First Nations, Métis and Inuit (FNMI) Students**

*Outcome: FNMI students are engaged in learning.*

**Comment on Results**

Due to the small number of First Nations, Metis and Inuit student in our building we do not have data to respond to. All students at Wheatland Elementary regardless of descent are treated with cultural respect.

**Strategies**

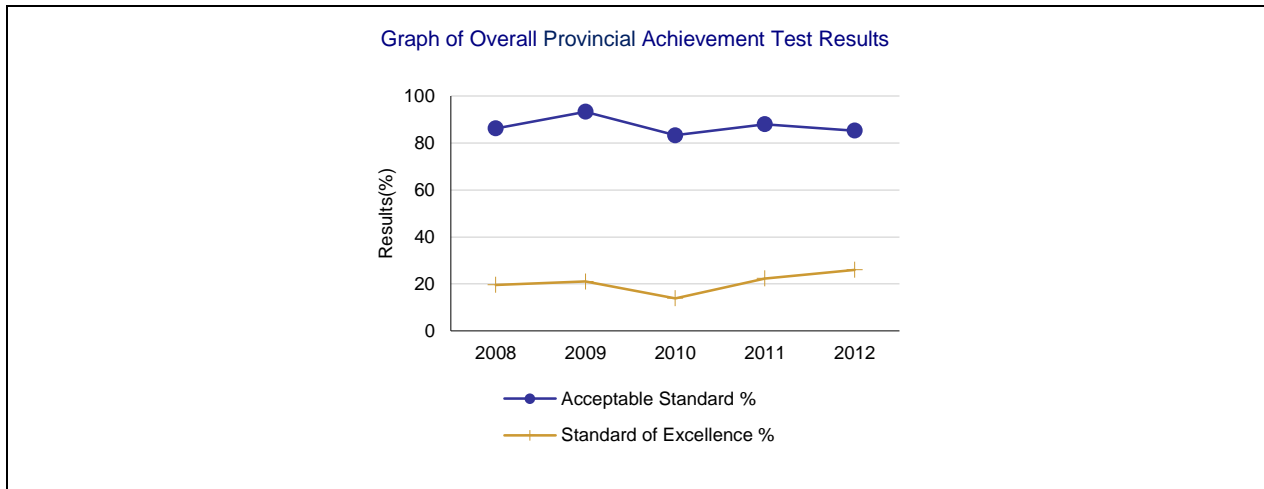
*Cultural differences are respected and appreciated in all classrooms.*

**Provincial Achievement Test Results – Measure Details**

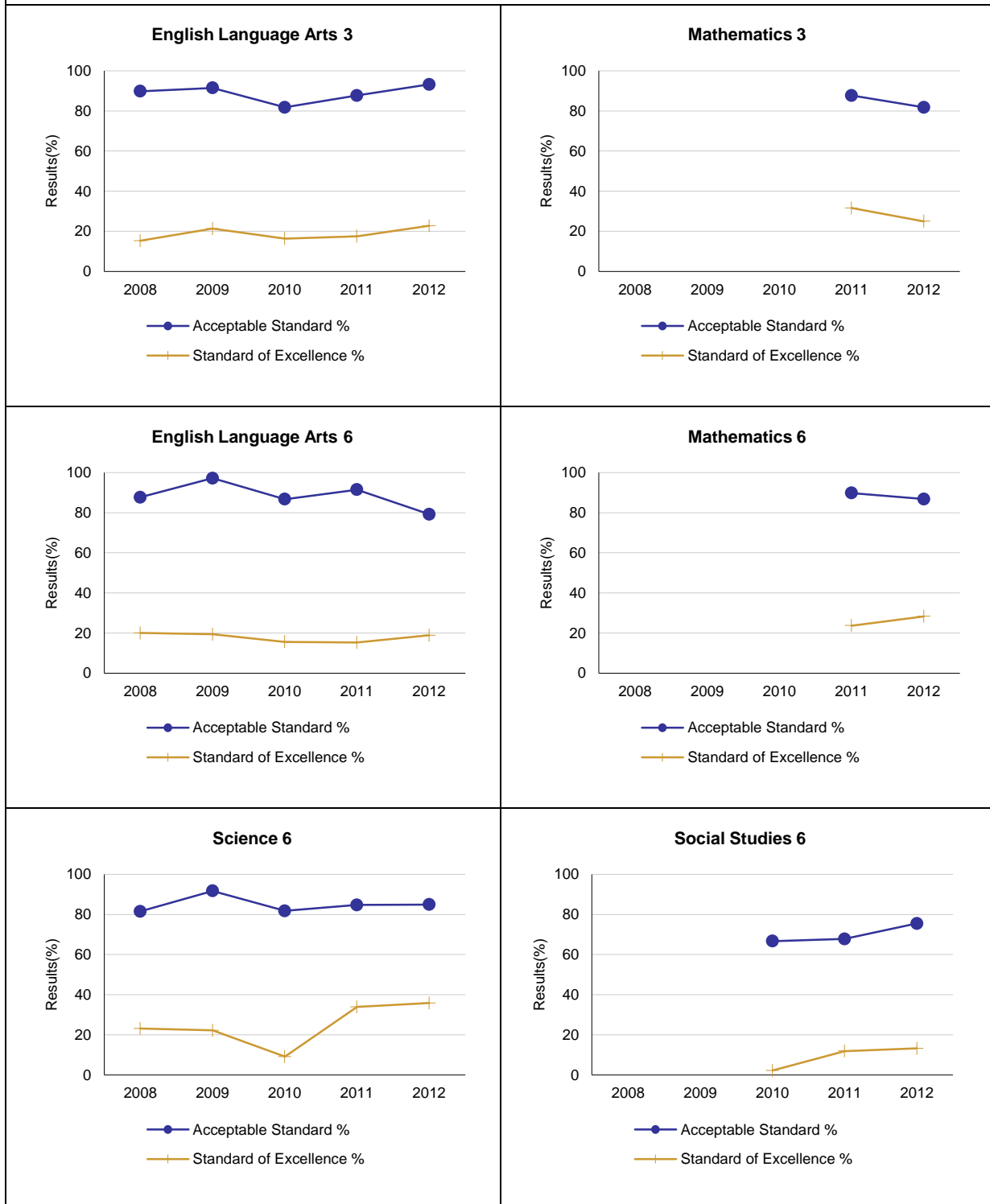
PAT Course by Course Results by Number Enrolled.													
		Results (in percentages)										Target	
		2008		2009		2010		2011		2012		2012	
		A	E	A	E	A	E	A	E	A	E	A	E
English Language Arts 3	School	89.8	15.3	91.5	21.3	81.8	16.4	87.7	17.5	93.2	22.7	93	20
	Authority	87.0	14.9	84.4	18.2	83.9	16.1	87.8	15.7	83.3	18.5		
	Province	80.1	16.1	81.3	18.2	81.6	19.5	81.8	17.5	81.9	20.4		
Mathematics 3	School	n/a	n/a	n/a	n/a	n/a	n/a	87.7	31.6	81.8	25.0	85	25
	Authority	n/a	n/a	n/a	n/a	n/a	n/a	82.7	23.2	76.4	25.0		
	Province	n/a	n/a	n/a	n/a	n/a	n/a	77.4	26.0	76.8	25.5		
English Language Arts 6	School	87.7	20.0	97.2	19.4	86.7	15.6	91.5	15.3	79.2	18.9	85	20
	Authority	82.7	18.9	83.3	16.7	87.4	19.1	86.6	17.1	83.7	15.3		
	Province	81.1	21.0	81.8	18.9	83.3	18.9	83.0	18.5	82.7	17.8		
Mathematics 6	School	n/a	n/a	n/a	n/a	n/a	n/a	89.8	23.7	86.8	28.3	90	25
	Authority	n/a	n/a	n/a	n/a	n/a	n/a	76.8	14.3	73.9	11.5		
	Province	n/a	n/a	n/a	n/a	n/a	n/a	73.7	17.8	74.7	16.6		
Science 6	School	81.5	23.1	91.7	22.2	81.8	9.1	84.7	33.9	84.9	35.8	85	25
	Authority	72.4	18.7	78.6	20.0	76.4	21.6	78.1	18.6	76.6	22.5		
	Province	74.8	24.1	76.5	24.8	76.8	26.4	76.2	25.0	77.8	28.2		
Social Studies 6	School	n/a	n/a	n/a	n/a	66.7	2.2	67.8	11.9	75.5	13.2	80	15
	Authority	n/a	n/a	n/a	n/a	65.5	10.9	67.1	12.9	68.2	13.4		
	Province	n/a	n/a	n/a	n/a	71.0	16.4	71.1	18.5	73.2	19.5		
	Province	n/a	n/a	n/a	n/a	67.2	14.3	69.5	15.3	67.9	17.3		

Note: Data values have been suppressed where the number of students is less than 6. Suppression is marked with an asterisk (\*).

"A" = Acceptable; "E" = Excellence — the percentages achieving the acceptable standard include the percentages achieving the standard of excellence.



Graph of Provincial Achievement Test Results by Course



Note: Data values have been suppressed where the number of students is less than 6. Suppression is marked with an asterisk (\*).

PAT Results Course By Course Summary By Enrolled With Measure Evaluation

		Wheatland Elementary School							Alberta			
Course	Measure	Achievement	Improvement	Overall	2012		Prev 3 Yr Avg		2012		Prev 3 Yr Avg	
					N	%	N	%	N	%	N	%
English Language Arts 3	Acceptable Standard	Very High	Improved	Excellent	44	93.2	53	87.0	44,689	81.9	42,242	81.6
	Standard of Excellence	Very High	Maintained	Excellent	44	22.7	53	18.4	44,689	20.4	42,242	18.4
French Language Arts 3	Acceptable Standard	n/a	n/a	n/a	n/a	n/a	n/a	n/a	3,378	82.1	3,091	82.8
	Standard of Excellence	n/a	n/a	n/a	n/a	n/a	n/a	n/a	3,378	14.5	3,091	16.0
Français 3	Acceptable Standard	n/a	n/a	n/a	n/a	n/a	n/a	n/a	502	82.3	524	84.4
	Standard of Excellence	n/a	n/a	n/a	n/a	n/a	n/a	n/a	502	12.5	524	17.1
Mathematics 3	Acceptable Standard	n/a	Maintained	n/a	44	81.8	57	87.7	44,689	76.8	42,957	77.4
	Standard of Excellence	n/a	Maintained	n/a	44	25.0	57	31.6	44,689	25.5	42,957	26.0
English Language Arts 6	Acceptable Standard	Intermediate	Declined	Issue	53	79.2	47	91.8	43,170	82.7	43,453	82.7
	Standard of Excellence	High	Maintained	Good	53	18.9	47	16.8	43,170	17.8	43,453	18.8
French Language Arts 6	Acceptable Standard	n/a	n/a	n/a	n/a	n/a	n/a	n/a	2,592	89.3	2,435	89.7
	Standard of Excellence	n/a	n/a	n/a	n/a	n/a	n/a	n/a	2,592	17.2	2,435	16.3
Français 6	Acceptable Standard	n/a	n/a	n/a	n/a	n/a	n/a	n/a	465	91.0	443	92.0
	Standard of Excellence	n/a	n/a	n/a	n/a	n/a	n/a	n/a	465	21.9	443	18.2
Mathematics 6	Acceptable Standard	n/a	Maintained	n/a	53	86.8	59	89.8	43,170	74.7	43,539	73.7
	Standard of Excellence	n/a	Maintained	n/a	53	28.3	59	23.7	43,170	16.6	43,539	17.8
Science 6	Acceptable Standard	Intermediate	Maintained	Acceptable	53	84.9	46	86.1	43,073	77.8	43,389	76.5
	Standard of Excellence	Very High	Improved	Excellent	53	35.8	46	21.7	43,073	28.2	43,389	25.4
Social Studies 6	Acceptable Standard	n/a	Maintained	n/a	53	75.5	52	67.2	43,170	73.2	43,569	71.1
	Standard of Excellence	n/a	Improved	n/a	53	13.2	52	7.0	43,170	19.5	43,569	17.5
English Language Arts 9	Acceptable Standard	n/a	n/a	n/a	n/a	n/a	n/a	n/a	42,309	77.4	43,450	79.0
	Standard of Excellence	n/a	n/a	n/a	n/a	n/a	n/a	n/a	42,309	16.4	43,450	15.3
English Lang Arts 9 KAE	Acceptable Standard	n/a	n/a	n/a	n/a	n/a	n/a	n/a	1,654	61.4	1,597	67.0
	Standard of Excellence	n/a	n/a	n/a	n/a	n/a	n/a	n/a	1,654	5.8	1,597	7.8
French Language Arts 9	Acceptable Standard	n/a	n/a	n/a	n/a	n/a	n/a	n/a	2,344	87.5	2,332	85.6
	Standard of Excellence	n/a	n/a	n/a	n/a	n/a	n/a	n/a	2,344	12.2	2,332	12.6
Français 9	Acceptable Standard	n/a	n/a	n/a	n/a	n/a	n/a	n/a	311	84.6	331	86.7
	Standard of Excellence	n/a	n/a	n/a	n/a	n/a	n/a	n/a	311	16.1	331	13.8
Mathematics 9	Acceptable Standard	n/a	n/a	n/a	n/a	n/a	n/a	n/a	41,909	66.5	42,538	66.1
	Standard of Excellence	n/a	n/a	n/a	n/a	n/a	n/a	n/a	41,909	17.8	42,538	17.3
Mathematics 9 KAE	Acceptable Standard	n/a	n/a	n/a	n/a	n/a	n/a	n/a	1,941	62.4	1,915	65.2
	Standard of Excellence	n/a	n/a	n/a	n/a	n/a	n/a	n/a	1,941	15.4	1,915	15.1
Science 9	Acceptable Standard	n/a	n/a	n/a	n/a	n/a	n/a	n/a	42,307	74.2	43,288	73.6
	Standard of Excellence	n/a	n/a	n/a	n/a	n/a	n/a	n/a	42,307	22.4	43,288	18.1
Science 9 KAE	Acceptable Standard	n/a	n/a	n/a	n/a	n/a	n/a	n/a	1,574	67.9	1,556	68.3
	Standard of Excellence	n/a	n/a	n/a	n/a	n/a	n/a	n/a	1,574	17.3	1,556	14.8
Social Studies 9	Acceptable Standard	n/a	n/a	n/a	n/a	n/a	n/a	n/a	42,429	68.9	43,449	68.1
	Standard of Excellence	n/a	n/a	n/a	n/a	n/a	n/a	n/a	42,429	19.1	43,449	18.9
Social Studies 9 KAE	Acceptable Standard	n/a	n/a	n/a	n/a	n/a	n/a	n/a	1,588	63.5	1,565	63.2
	Standard of Excellence	n/a	n/a	n/a	n/a	n/a	n/a	n/a	1,588	13.9	1,565	14.6

Note: Data values have been suppressed where the number of students is less than 6. Suppression is marked with an asterisk (\*).

Achievement Evaluation is not calculated for courses that do not have sufficient data available, either due to too few jurisdictions offering the course or because of changes in tests.

### Measure Evaluation Reference - Achievement Evaluation

Achievement evaluation is based upon a comparison of Current Year data to a set of standards which remain consistent over time. The Standards are calculated by taking the 3 year average of baseline data for each measure across all school jurisdictions and calculating the 5th, 25th, 75th, and 95th percentiles. Once calculated, these standards remain in place from year to year to allow for consistent planning and evaluation.

The table below shows the range of values defining the 5 achievement evaluation levels for each measure.

Course	Measure	Very Low	Low	Intermediate	High	Very High
English Language Arts 3	Acceptable Standard	0.00 - 72.53	72.53 - 80.49	80.49 - 89.12	89.12 - 93.04	93.04 - 100.00
	Standard of Excellence	0.00 - 6.06	6.06 - 11.35	11.35 - 16.93	16.93 - 20.27	20.27 - 100.00
French Language Arts 3	Acceptable Standard	0.00 - 60.68	60.68 - 77.74	77.74 - 88.22	88.22 - 94.88	94.88 - 100.00
	Standard of Excellence	0.00 - 3.31	3.31 - 8.38	8.38 - 17.31	17.31 - 25.31	25.31 - 100.00
English Language Arts 6	Acceptable Standard	0.00 - 67.95	67.95 - 78.40	78.40 - 86.09	86.09 - 91.37	91.37 - 100.00
	Standard of Excellence	0.00 - 6.83	6.83 - 11.65	11.65 - 17.36	17.36 - 22.46	22.46 - 100.00
French Language Arts 6	Acceptable Standard	0.00 - 41.69	41.69 - 73.54	73.54 - 92.32	92.32 - 97.93	97.93 - 100.00
	Standard of Excellence	0.00 - 2.72	2.72 - 8.13	8.13 - 15.29	15.29 - 23.86	23.86 - 100.00
Science 6	Acceptable Standard	0.00 - 60.36	60.36 - 78.51	78.51 - 86.46	86.46 - 90.64	90.64 - 100.00
	Standard of Excellence	0.00 - 11.74	11.74 - 17.42	17.42 - 25.34	25.34 - 34.31	34.31 - 100.00
English Language Arts 9	Acceptable Standard	0.00 - 63.55	63.55 - 75.66	75.66 - 83.70	83.70 - 90.27	90.27 - 100.00
	Standard of Excellence	0.00 - 5.96	5.96 - 9.43	9.43 - 14.72	14.72 - 20.46	20.46 - 100.00
French Language Arts 9	Acceptable Standard	0.00 - 67.59	67.59 - 81.33	81.33 - 92.06	92.06 - 97.26	97.26 - 100.00
	Standard of Excellence	0.00 - 1.67	1.67 - 6.81	6.81 - 17.11	17.11 - 28.68	28.68 - 100.00
Science 9	Acceptable Standard	0.00 - 50.57	50.57 - 60.14	60.14 - 72.50	72.50 - 76.89	76.89 - 100.00
	Standard of Excellence	0.00 - 3.39	3.39 - 6.71	6.71 - 11.81	11.81 - 15.85	15.85 - 100.00

Notes:

The range of values at each evaluation level is interpreted as greater than or equal to the lower value, and less than the higher value. For the Very High evaluation level, values range from greater than or equal to the lower value to 100%.

Achievement Evaluation is not calculated for courses that do not have sufficient data available, either due to too few jurisdictions offering the course or because of changes in tests.

### Improvement Table

For each jurisdiction, improvement evaluation consists of comparing the Current Year result for each measure with the previous three-year average. A chi-square statistical test is used to determine the significance of the improvement. This test takes into account the size of the jurisdiction in the calculation to make improvement evaluation fair across jurisdictions of different sizes.

The table below shows the definition of the 5 improvement evaluation levels based upon the chi-square result.

Evaluation Category	Chi-Square Range
Declined Significantly	3.84 + (current < previous 3-year average)
Declined	1.00 - 3.83 (current < previous 3-year average)
Maintained	less than 1.00
Improved	1.00 - 3.83 (current > previous 3-year average)
Improved Significantly	3.84 + (current > previous 3-year average)

### Overall Evaluation Table

The overall evaluation combines the Achievement Evaluation and the Improvement Evaluation. The table below illustrates how the Achievement and Improvement evaluations are combined to get the overall evaluation.

	Achievement				
	Very High	High	Intermediate	Low	Very Low
Improved Significantly	Excellent	Good	Good	Good	Acceptable
Improved	Excellent	Good	Good	Acceptable	Issue
Maintained	Excellent	Good	Acceptable	Issue	Concern
Declined	Good	Acceptable	Issue	Issue	Concern
Declined Significantly	Acceptable	Issue	Issue	Concern	Concern

### Measure Evaluation Reference - Achievement Evaluation

Achievement evaluation is based upon a comparison of Current Year data to a set of standards which remain consistent over time. The Standards are calculated by taking the 3 year average of baseline data for each measure across all school jurisdictions and calculating the 5th, 25th, 75th, and 95th percentiles. Once calculated, these standards remain in place from year to year to allow for consistent planning and evaluation.

The table below shows the range of values defining the 5 achievement evaluation levels for each measure.

[No Data for PAT Achievement Evaluation Reference]

#### Notes:

The range of values at each evaluation level is interpreted as greater than or equal to the lower value, and less than the higher value. For the Very High evaluation level, values range from greater than or equal to the lower value to 100%.

Achievement Evaluation is not calculated for courses that do not have sufficient data available, either due to too few jurisdictions offering the course or because of changes in examinations.

### Improvement Table

For each jurisdiction, improvement evaluation consists of comparing the Current Year result for each measure with the previous three-year average. A chi-square statistical test is used to determine the significance of the improvement. This test takes into account the size of the jurisdiction in the calculation to make improvement evaluation fair across jurisdictions of different sizes.

The table below shows the definition of the 5 improvement evaluation levels based upon the chi-square result.

[No Data for PAT Improvement Reference]

### Overall Evaluation Table

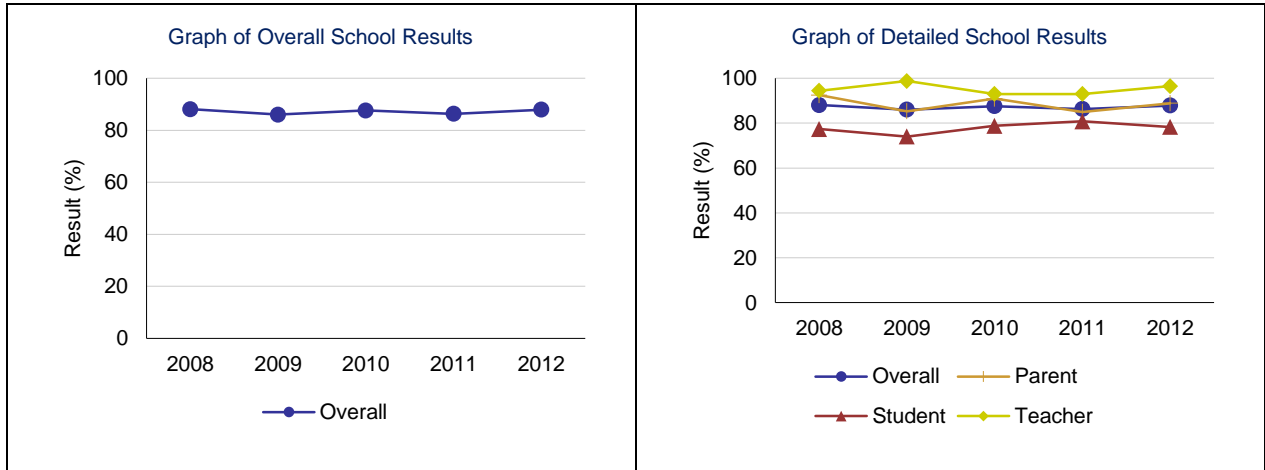
The overall evaluation combines the Achievement Evaluation and the Improvement Evaluation. The table below illustrates how the Achievement and Improvement evaluations are combined to get the overall evaluation.

[No Data for PAT Overall Evaluation Reference]

**Citizenship – Measure Details**

Percentage of teachers, parents and students who are satisfied that students model the characteristics of active citizenship.

	School					Authority					Province				
	2008	2009	2010	2011	2012	2008	2009	2010	2011	2012	2008	2009	2010	2011	2012
Overall	88.1	86.0	87.6	86.3	87.9	77.2	77.7	79.4	80.7	81.8	77.9	80.3	81.4	81.9	82.5
Teacher	94.4	98.8	93.0	93.0	96.5	92.0	93.1	92.7	94.9	93.9	90.6	91.8	93.0	92.7	93.1
Parent	92.5	85.3	90.9	85.0	88.9	74.0	73.7	74.8	74.7	76.4	74.7	77.4	78.5	78.6	79.4
Student	77.4	74.0	78.8	80.8	78.3	65.6	66.3	70.7	72.5	75.1	68.5	71.8	72.7	74.5	75.0

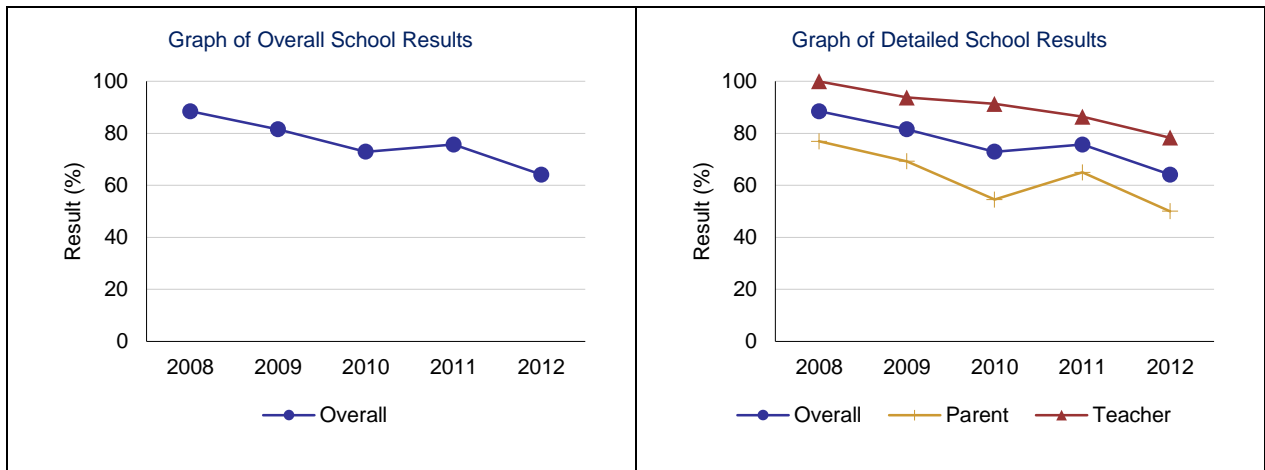


Note: Data values have been suppressed where the number of respondents is less than 6. Suppression is marked with an asterisk (\*).

**Work Preparation – Measure Details**

Percentage of teachers and parents who agree that students are taught attitudes and behaviours that will make them successful at work when they finish school.

	School					Authority					Province				
	2008	2009	2010	2011	2012	2008	2009	2010	2011	2012	2008	2009	2010	2011	2012
Overall	88.5	81.5	72.9	75.7	64.1	83.3	81.0	79.5	82.1	78.2	80.1	79.6	79.9	80.1	79.7
Teacher	100.0	93.8	91.3	86.4	78.3	91.8	91.3	93.8	93.7	91.3	89.3	88.9	90.0	89.6	89.5
Parent	76.9	69.2	54.5	65.0	50.0	74.8	70.7	65.2	70.6	65.0	70.9	70.2	69.8	70.6	69.9



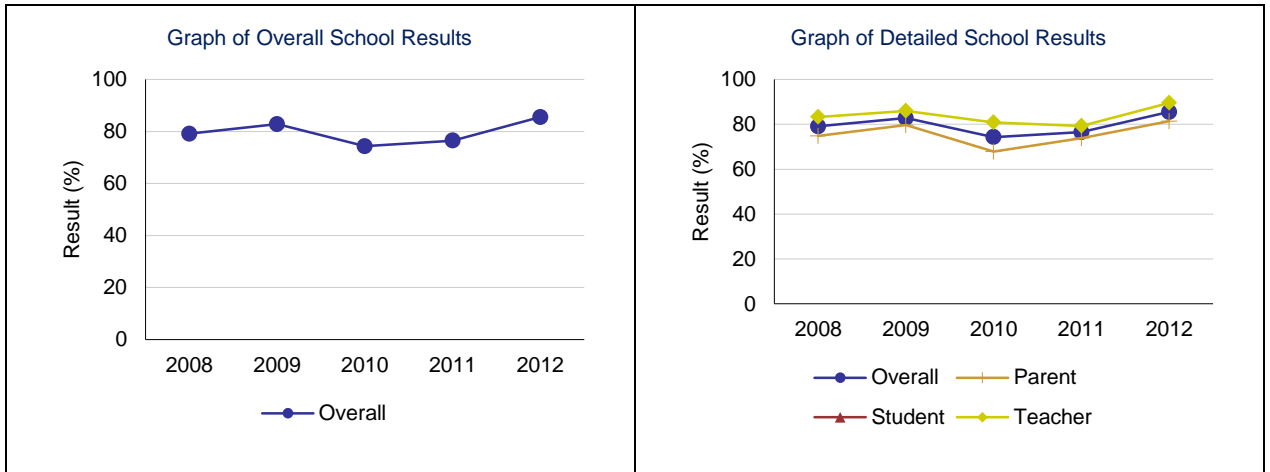
Note: Data values have been suppressed where the number of respondents is less than 6. Suppression is marked with an asterisk (\*).



**Program of Studies – Measure Details**

Percentage of teachers, parents and students satisfied with the opportunity for students to receive a broad program of studies including fine arts, career, technology, and health and physical education.

	School					Authority					Province				
	2008	2009	2010	2011	2012	2008	2009	2010	2011	2012	2008	2009	2010	2011	2012
Overall	79.1	82.8	74.3	76.5	85.5	76.6	77.3	73.4	76.1	78.6	79.4	80.3	80.5	80.9	80.7
Teacher	83.3	86.0	80.9	79.3	89.6	86.3	85.8	83.1	85.5	86.6	86.4	86.8	87.7	87.6	87.3
Parent	74.8	79.7	67.8	73.8	81.4	73.1	73.0	69.2	71.4	73.4	77.6	78.7	78.0	78.3	78.1
Student	n/a	n/a	n/a	n/a	n/a	70.4	73.1	68.0	71.6	75.7	74.1	75.3	75.9	76.9	76.9

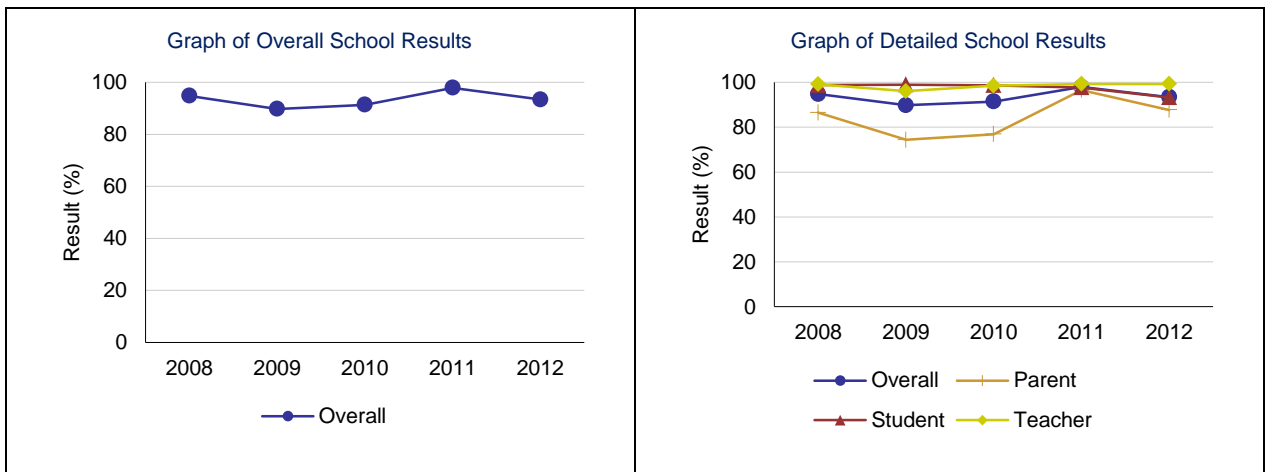


Note: Data values have been suppressed where the number of respondents is less than 6. Suppression is marked with an asterisk (\*).

**Education Quality – Measure Details**

Percentage of teachers, parents and students satisfied with the overall quality of basic education.

	School					Authority					Province				
	2008	2009	2010	2011	2012	2008	2009	2010	2011	2012	2008	2009	2010	2011	2012
Overall	94.8	89.8	91.4	97.9	93.4	89.0	88.6	87.8	88.8	90.5	88.2	89.3	89.2	89.4	89.4
Teacher	99.1	96.1	98.5	99.3	99.3	96.2	95.3	96.9	98.2	97.6	94.9	95.3	95.6	95.5	95.4
Parent	86.5	74.4	76.9	96.6	87.7	84.4	82.9	79.3	81.4	84.7	83.0	84.4	83.9	84.2	84.2
Student	98.8	99.0	98.7	97.7	93.3	86.4	87.6	87.0	86.7	89.0	86.6	88.3	88.2	88.5	88.6

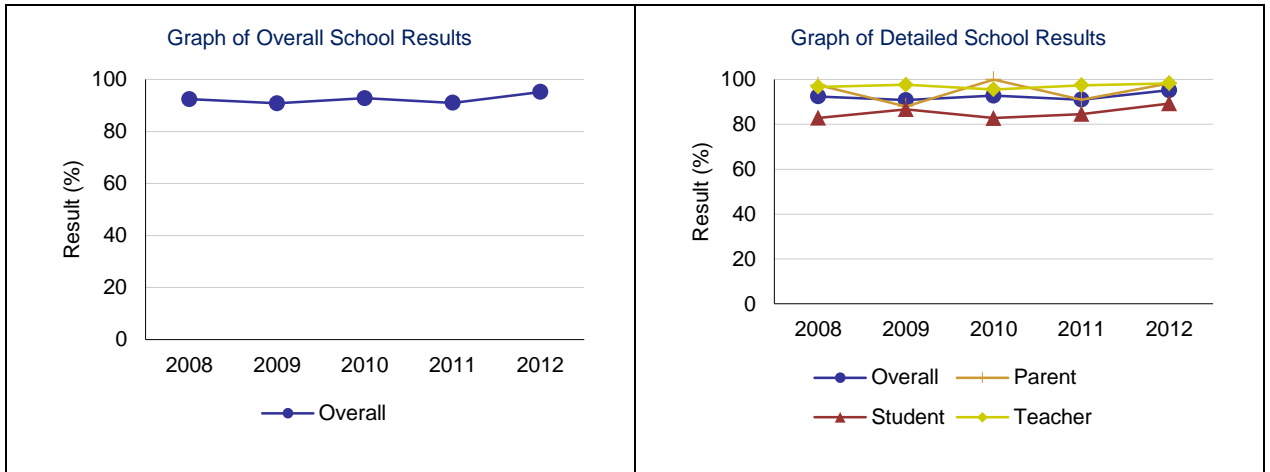


Note: Data values have been suppressed where the number of respondents is less than 6. Suppression is marked with an asterisk (\*).

**Safe and Caring – Measure Details**

Percentage of teacher, parent and student agreement that: students are safe at school, are learning the importance of caring for others, are learning respect for others and are treated fairly in school.

	School					Authority					Province				
	2008	2009	2010	2011	2012	2008	2009	2010	2011	2012	2008	2009	2010	2011	2012
Overall	92.4	90.8	92.8	91.0	95.2	85.9	87.4	87.5	88.7	89.1	85.1	86.9	87.6	88.1	88.6
Teacher	96.7	97.6	95.6	97.4	98.3	95.2	95.8	95.4	97.4	95.9	93.1	93.8	94.4	94.5	94.8
Parent	97.5	88.0	100.0	91.0	98.2	83.7	85.7	85.2	86.4	86.9	83.2	85.3	86.1	86.6	87.4
Student	82.9	86.7	82.8	84.6	89.3	78.7	80.8	82.0	82.4	84.6	79.1	81.7	82.2	83.3	83.7

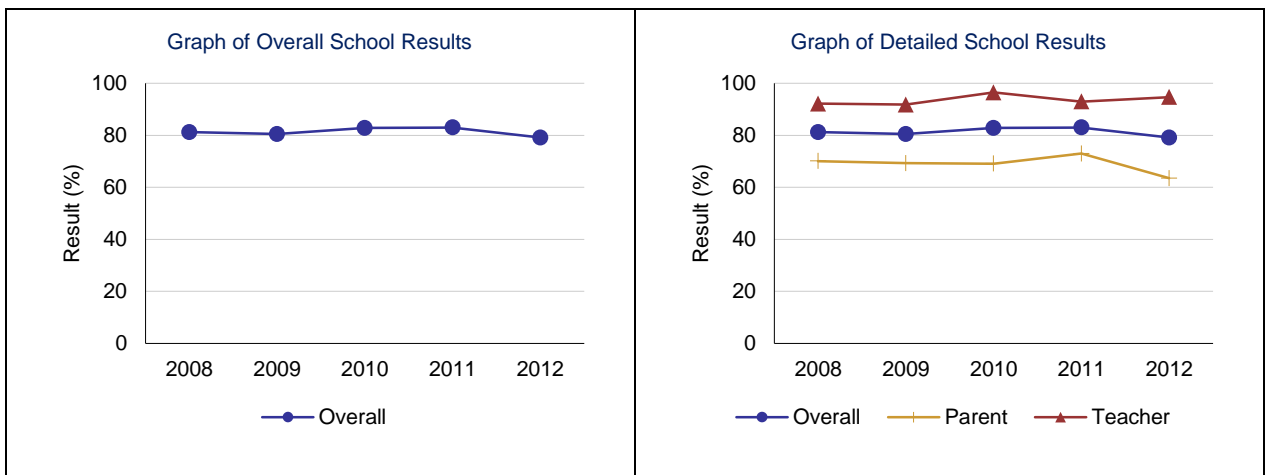


Note: Data values have been suppressed where the number of respondents is less than 6. Suppression is marked with an asterisk (\*).

**Parental Involvement – Measure Details**

Percentage of teachers and parents satisfied with parental involvement in decisions about their child's education.

	School					Authority					Province				
	2008	2009	2010	2011	2012	2008	2009	2010	2011	2012	2008	2009	2010	2011	2012
Overall	81.2	80.5	82.8	83.0	79.1	78.3	79.4	77.2	77.9	81.4	78.2	80.1	80.0	79.9	79.7
Teacher	92.2	91.8	96.5	93.0	94.7	90.4	90.5	88.4	89.0	89.3	87.5	88.0	88.6	88.1	88.0
Parent	70.1	69.3	69.1	73.0	63.5	66.2	68.2	66.1	66.7	73.5	69.0	72.2	71.3	71.7	71.4

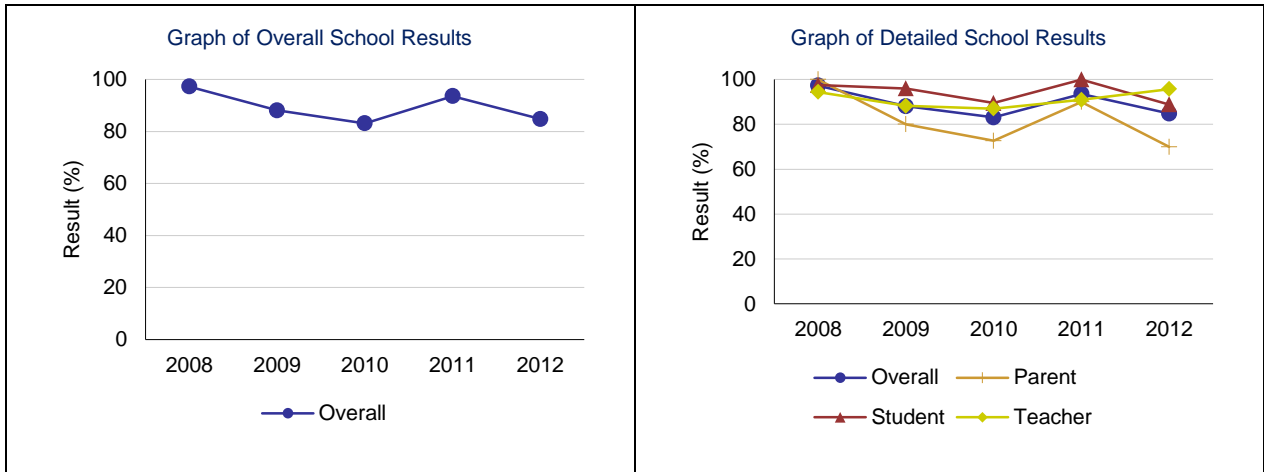


Note: Data values have been suppressed where the number of respondents is less than 6. Suppression is marked with an asterisk (\*).

**School Improvement – Measure Details**

Percentage of teachers, parents and students indicating that their school and schools in their jurisdiction have improved or stayed the same the last three years.

	School					Authority					Province				
	2008	2009	2010	2011	2012	2008	2009	2010	2011	2012	2008	2009	2010	2011	2012
Overall	97.3	88.1	83.1	93.6	84.8	79.7	79.9	78.8	81.0	81.2	77.0	79.4	79.9	80.1	80.0
Teacher	94.4	88.2	87.0	90.9	95.7	84.7	83.4	85.3	86.1	86.4	75.6	78.2	80.8	80.1	81.1
Parent	100.0	80.0	72.7	90.0	70.0	76.5	76.6	71.7	75.8	71.6	75.9	78.1	77.0	77.3	76.2
Student	97.5	96.0	89.5	100.0	88.9	77.8	79.7	79.3	81.2	85.7	79.5	81.8	81.8	82.9	82.7



Note: Data values have been suppressed where the number of respondents is less than 6. Suppression is marked with an asterisk (\*).